



Shared Stewardship of Research Data

Hosted by Libraries and Cultural Resources
University of Calgary

Chuck Humphrey
Director, Portage
February 9, 2016

The Research Data Ecosystem

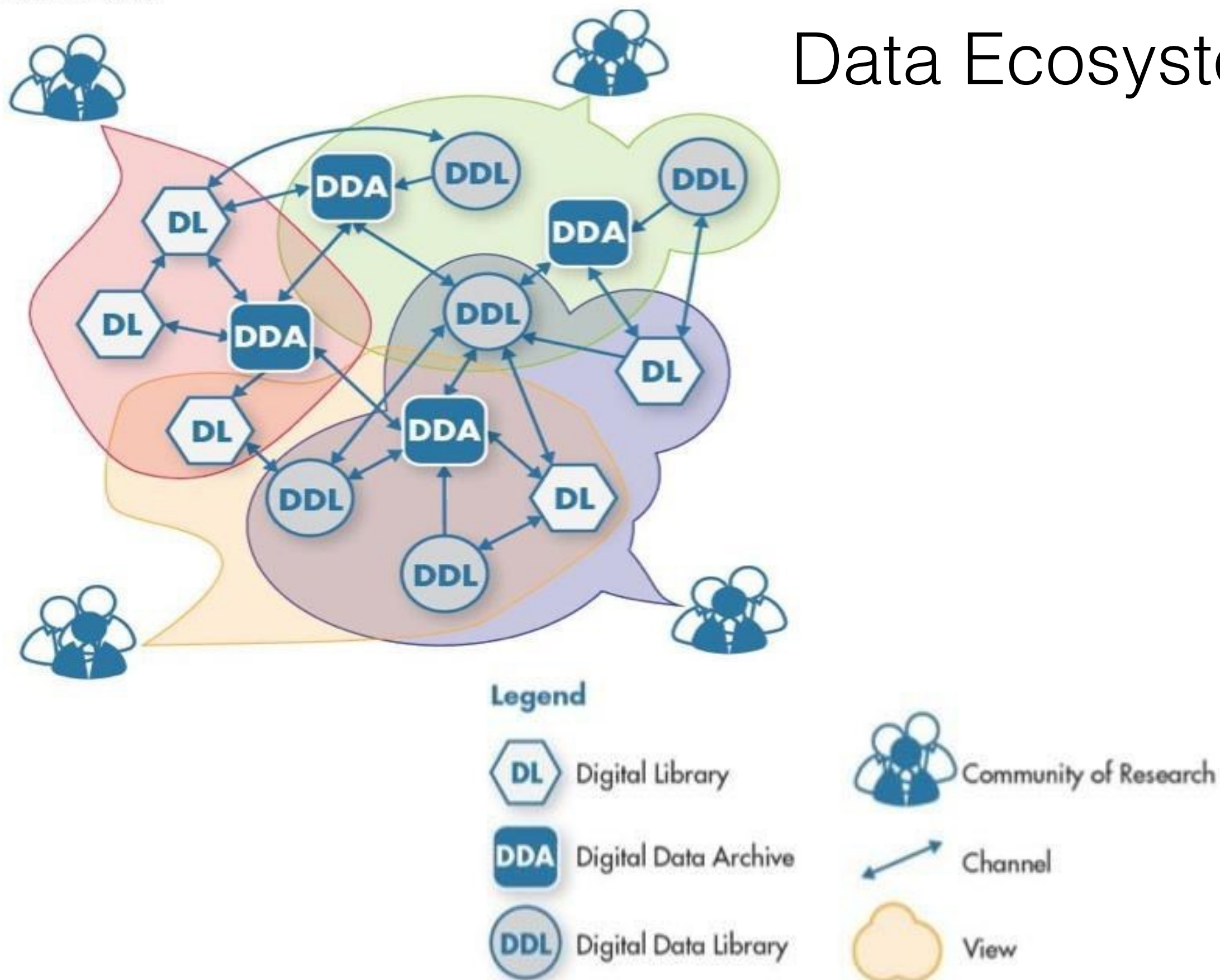
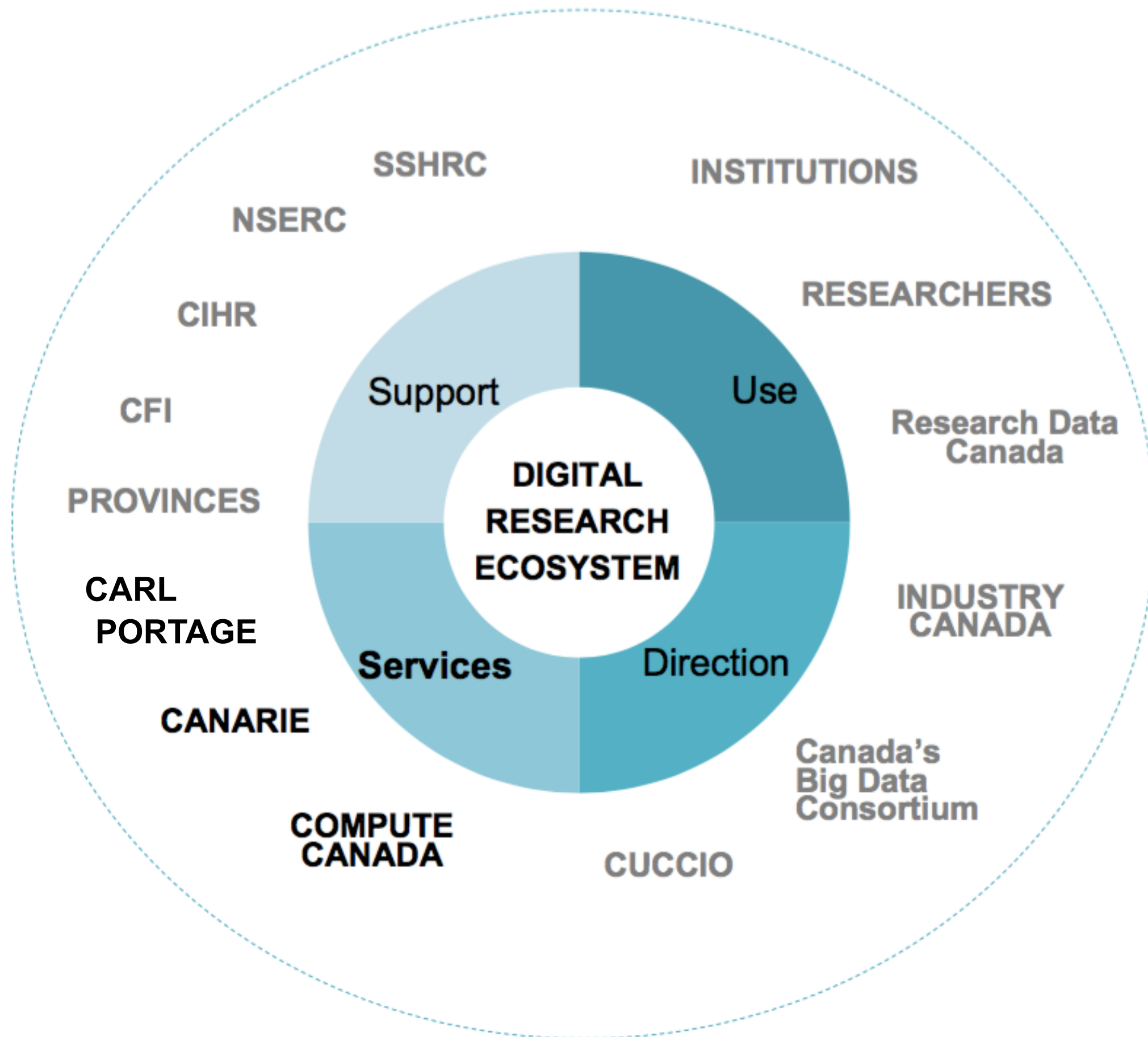


Figure 1 – GRDI2020 Digital Science Ecosystem





compute | **calcul**
canada | canada

THE LEADERSHIP COUNCIL
LE CONSEIL DU LEADERSHIP



canarie



portage



U¹⁵
Group of Canadian Research Universities
Regroupement des universités de recherche du Canada



OCUL Ontario Council of
University Libraries



COPPUL | Council of Prairie and
Pacific University Libraries



CAUL
CBUA

**Council of Atlantic
University Libraries**

**Conseil des bibliothèques
universitaires de l'Atlantique**

Portage

► CARL-CFI
Research Data
Management
Infrastructure
proposal team,
2010-2011

Lifecycle Stage	Responsible Stakeholders	Function	Sub-function	Micro-service	OAIS
REUSE	Virtual Research Communities Virtual Laboratories Data Centres Data Libraries	Harmonization / Repurposing	Computation	Linkage resolution <ul style="list-style-type: none"> • Match • Merge • Layer 	Dissemination Information Package
			Retrieval	Method <ul style="list-style-type: none"> • Extraction • Download 	
ACCESS	Data Libraries Staging Repositories Domain Archives Research Web Portals Data Centres Research Data Centres	Access	Discovery	Find <ul style="list-style-type: none"> • Browse • Search 	
			Permission	Secure data management <ul style="list-style-type: none"> • Disclosure control • De-identification 	
				Authentication <ul style="list-style-type: none"> • Authorization • Identity 	
PRESERVATION	Core Network of Trustworthy Digital Repositories Dedicated to Preserving Research Data	Curation	Value	Interoperation <ul style="list-style-type: none"> • Annotation • Notification 	Archival Information Package
			Service	Application <ul style="list-style-type: none"> • Transformation • Search • Index • Ingest 	
		Preservation	Context	Interpretation <ul style="list-style-type: none"> • Characterization • Inventory 	
			State	Protection <ul style="list-style-type: none"> • Replication • Fixity • Storage • Identity 	
INGEST	Data Centres Ingest Centres Staging Repositories Domain Archives	Submission	Package	Delivery <ul style="list-style-type: none"> • Document • Inventory • Assembly 	Submission Information Package

Portage

- ▶ Project ARC was initiated and supported by CARL as a one-year pilot started on Dec 2, 2013
- ▶ ARC drew upon experts from academic libraries involved in past national and regional research data management initiatives and in current digital infrastructure projects
- ▶ Out of the Digital Infrastructure Summit of January 28-29, 2014 ARC became engaged in the RDC Federated Pilot but also worked on its own pilots
- ▶ CARL agreed to an organizational framework on April 7, 2015 and a transition plan on May 5, 2015

Three goals

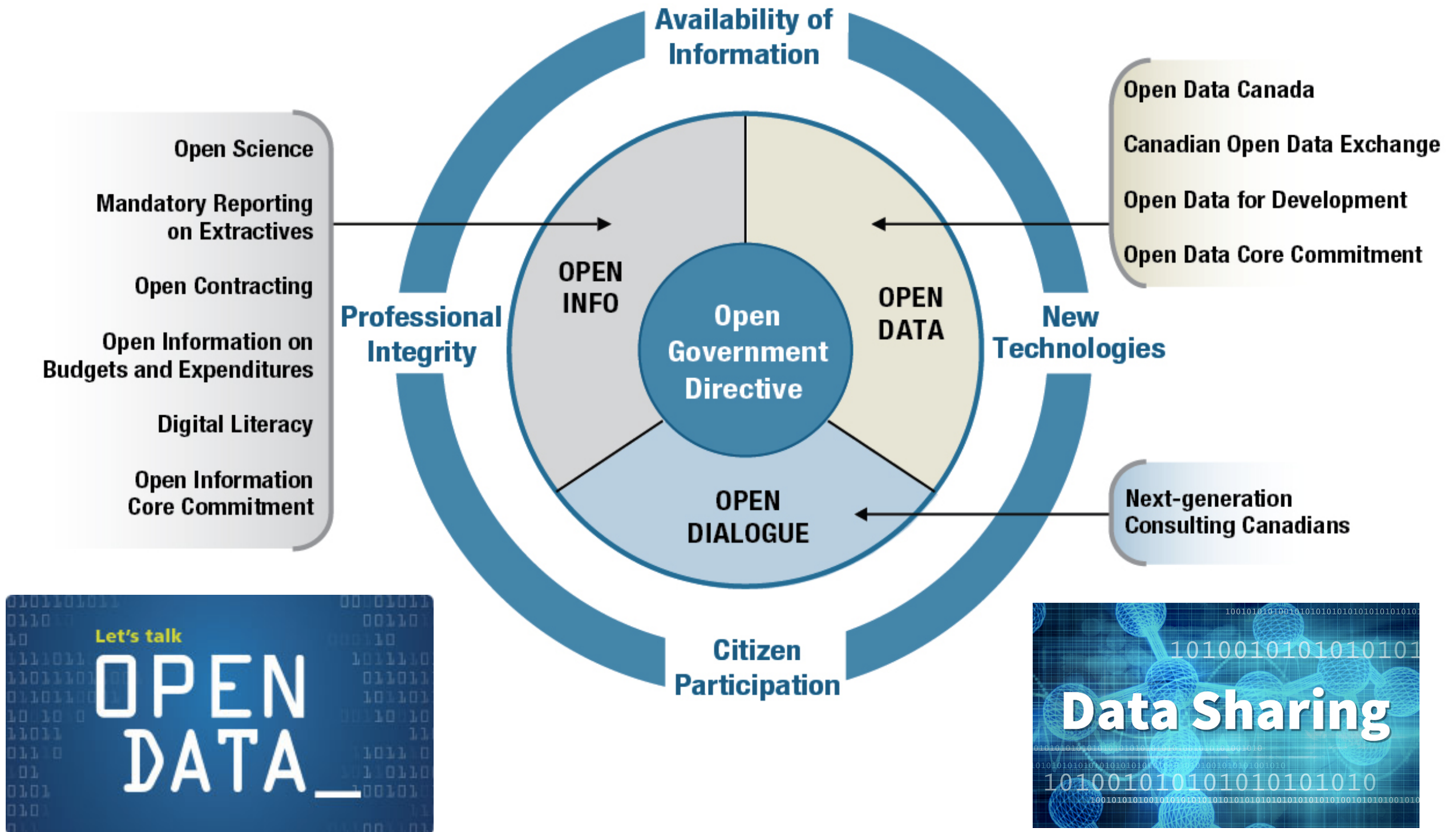
Shared stewardship of research data

- Develop a national research data culture
- Foster a community of practice for research data
- Build national research data services and infrastructure

Data culture

- *The Agencies believe that research data collected with the use of public funds belong to the fullest extent possible in the public domain, available for reuse by others, and they strongly support the creation of a robust and efficient environment for data stewardship in Canada and internationally.*
- Tri-Agency Statement of Principles on Digital Data Management, January 2016

Data culture



Research data management in Canadian universities

- *The purpose of this statement of principles is not to create one national RDM policy, nor to replace existing institutional policies, but rather to try to ensure that there is a common core to the principles governing RDM among Canada's universities.*
- Task group of senior university administrators and individuals from Research Data Canada, January 2016

Portage principles

- ▶ **Research data are a public good**
- ▶ **Intelligent access:** openness, with respect for privacy
- ▶ **Collaborative approaches:** cost savings and shared expertise
- ▶ **Inclusiveness:** aim to serve all researchers and create a more level playing field
- ▶ Commitment to **standards and interoperability**
- ▶ **International relationships:** liaise internationally and ensure Portage's work keeps pace with international practices
- ▶ **Respect for differences:** flexibility to meet the needs of different regions, institutions, and disciplines
- ▶ **Open source:** Tools will be contributed back to the community
- ▶ **Stewardship:** a sense of responsibility for managing research data over the long term



The Portage by [Winslow Homer](#), 1897

Two interlinked mandates:

- ▶ A library-based network of expertise on research data management, and
- ▶ National platforms for planning, preserving, and discovering research data

Network of expertise

Capitalize on expertise and services within Canadian academic libraries in specific areas of research data management:

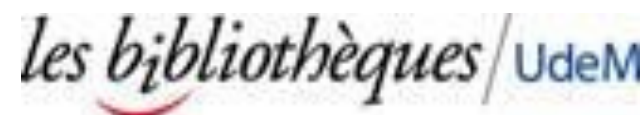
- data management planning
- privacy, security, and confidentiality
- data curation
- data preservation
- data dissemination and access
- data discovery
- skills and training

Portage expert groups

Data Management Plan Expert Group (DMPEG)

Eugene Barsky, UBC
Jay Brodeur, McMaster
John Brosz, Calgary
Jane Burpee, McGill
Talia Chung, UOttawa
James Dorion, Alberta

Carla Graebner, SFU
Alex Guindon, Concordia
Chuck Humphrey, Portage
Amber Leahey, Scholars Portal
Jeff Moon (Chair), Queens
Carol Perry, Guelph



Portage expert groups

Data Preservation Expert Group (PEG)

Corey Davis, COPPUL
Steve Marks (Chair), Toronto
Umar Qasim, Alberta

- Working with Compute Canada on the development of research data platforms

Data Discovery Expert Group (Discover)

Eugene Barsky, UBC
John Bros, Calgary
Amber Leahey, OCUL/SP

- Terms of reference just being completed this week. Call for further participants.

Portage expert groups

Online RDM Training (Train)

James Doiron, Alberta
Jane Fry, Carleton
Carol Perry, Guelph

- Terms of reference being drafted and then a call for more participants. Looking to adapt the U of Edinburgh MANTRA online course.

Research Data and Ethics

- This group is being developed in partnership with CAREB. Terms of reference will be completed before a call for participants. Terms of reference will include topics on confidentiality, privacy, and security.

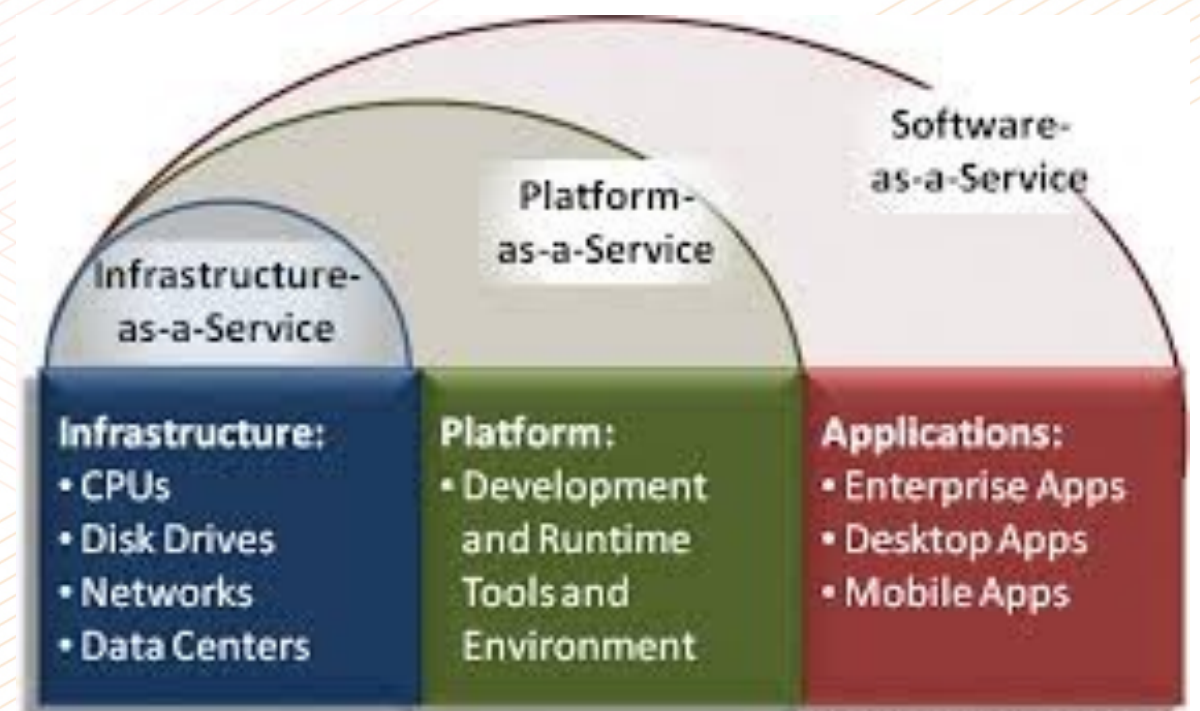
Portage expert groups

Peer Certification of Data Repositories

- This group is in proposal mode following a discussion with Library and Archives Canada management board. Looking to work with LAC to establish a peer certification process.

Future Expert Groups

- Data Curation
- Data Access and Dissemination



Source: ChainLink Research

Lifecycle Stage	Responsible Stakeholders	Function	Sub-function	Micro-service	OAIS
REUSE	Virtual Research Communities Virtual Laboratories Data Centres Data Libraries	Harmonization / Repurposing	Computation	Linkage resolution <ul style="list-style-type: none">● Match● Merge● Layer	Dissemination Information Package
			Retrieval	Method <ul style="list-style-type: none">● Extraction● Download	
ACCESS	Data Libraries Staging Repositories Domain Archives Research Web Portals Data Centres Research Data Centres	Access	Discovery	Find <ul style="list-style-type: none">● Browse● Search	
			Permission	Secure data management <ul style="list-style-type: none">● Disclosure control● De-identification	
				Authentication <ul style="list-style-type: none">● Authorization● Identity	
PRESERVATION	Core Network of Trustworthy Digital Repositories Dedicated to Preserving Research Data	Curation	Value	Interoperation <ul style="list-style-type: none">● Annotation● Notification	Archival Information Package
			Service	Application <ul style="list-style-type: none">● Transformation● Search● Index● Ingest	
		Preservation	Context	Interpretation <ul style="list-style-type: none">● Characterization● Inventory	
			State	Protection <ul style="list-style-type: none">● Replication● Fixity● Storage● Identity	
INGEST	Data Centres Ingest Centres Staging Repositories Domain Archives	Submission	Package	Delivery <ul style="list-style-type: none">● Document● Inventory Assembly	Submission Information Package



Shared stewardship of research data

[Version française](#)

[Home](#)

[About](#)

[Help](#)

Signed out successfully.

DMP Assistant is a bilingual tool for preparing data management plans (DMPs). The tool follows best practices in data stewardship and walks researchers step-by-step through key questions about data management.

- Step 1** Sign up with DMP Assistant
- Step 2** Sign in and select a template under Organizations. The Portage template is the default.
- Step 3** Answer the questions that are relevant to your work. Guidance and examples are provided.
- Step 4** Revisit the tool throughout your research to review or revise your answers.

Sign in



If you have an existing account with DMP Assistant or previous version of DMP Builder.

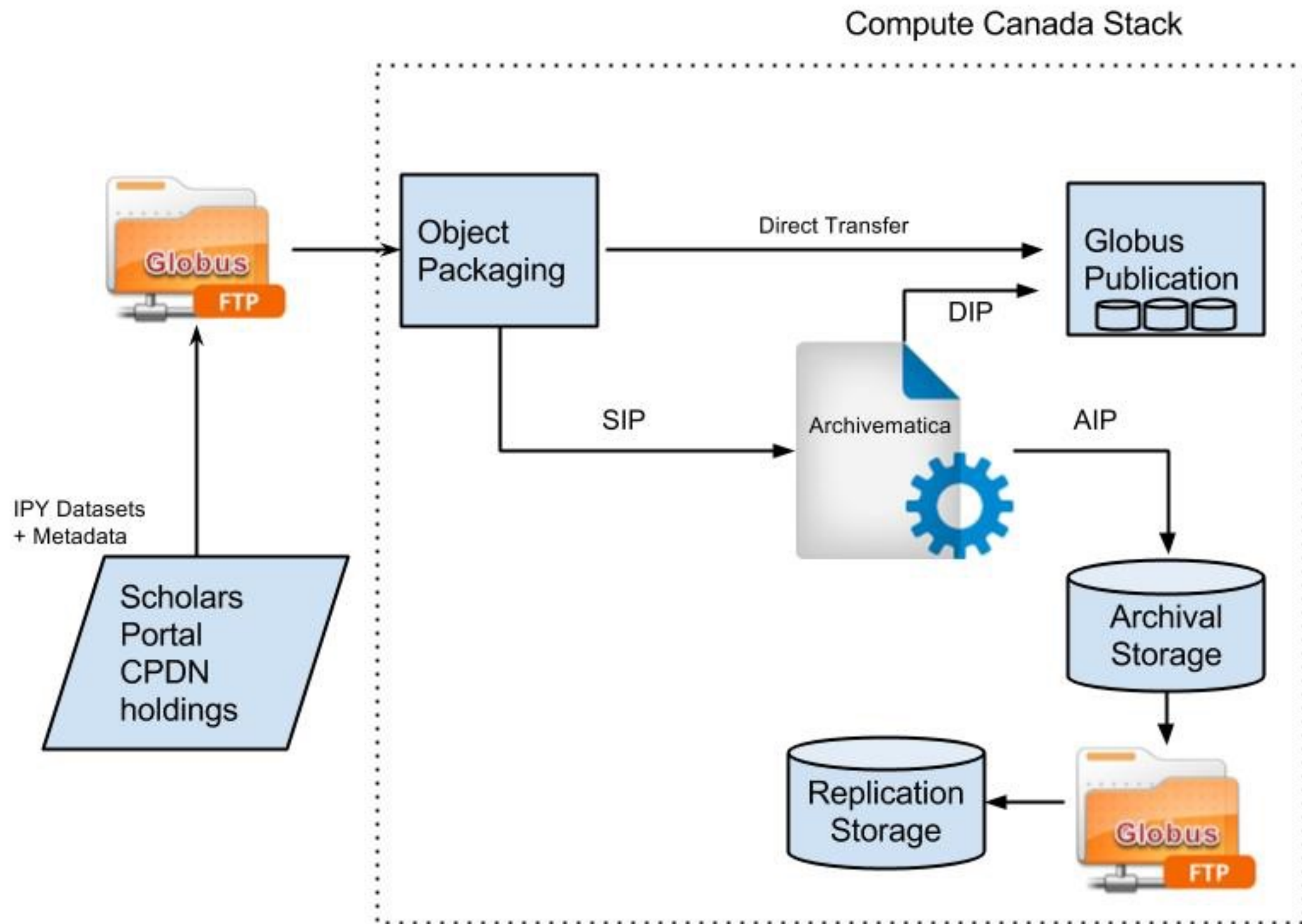
Sign up



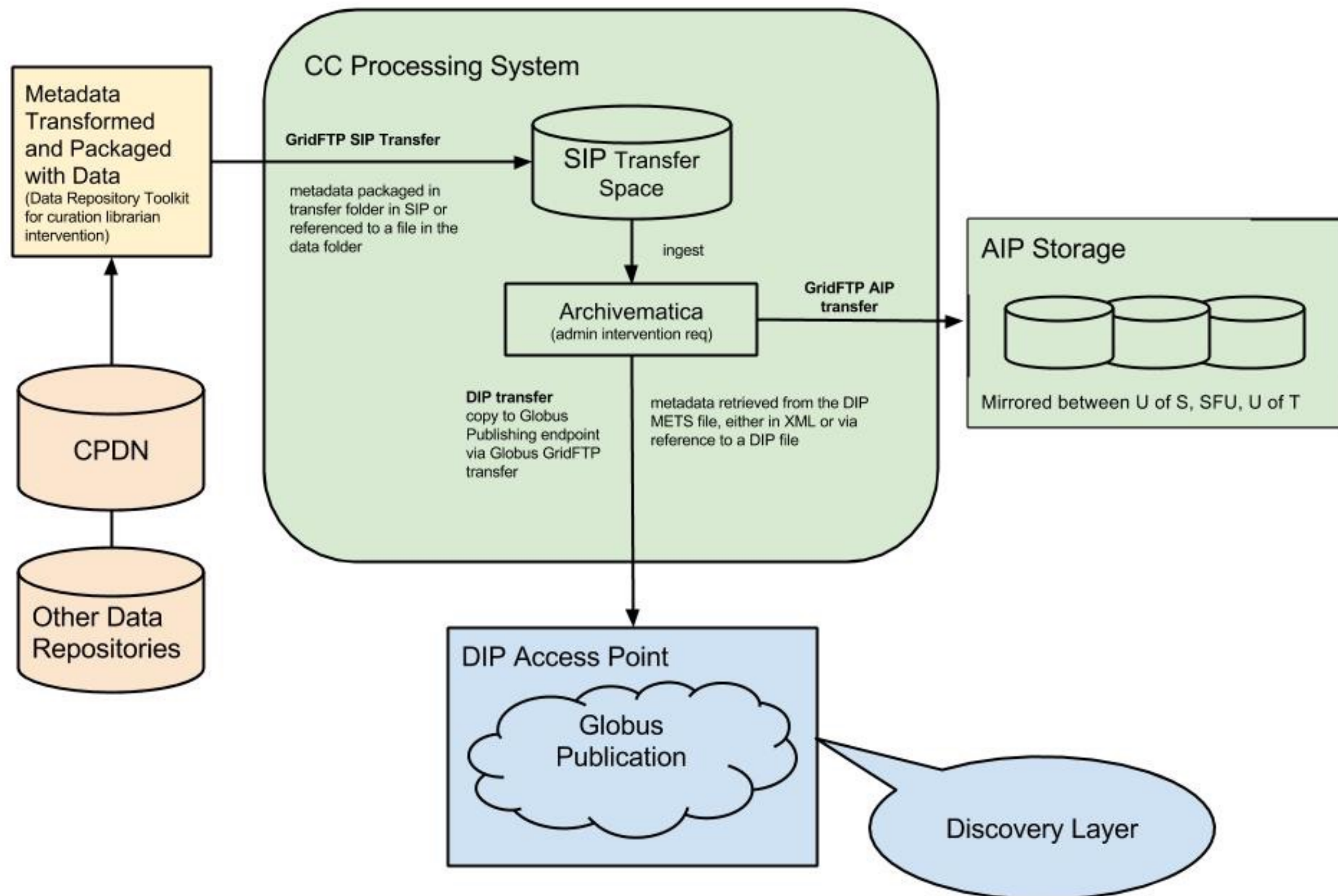
New to DMP Assistant? Sign up today.

Please note that we are currently working on single sign-in authentication. For now, please create a new DMP Assistant account. You will have the option to link your DMP Assistant account to your campus ID when that feature becomes available.

IPY-RDC Federated Pilot



Preservation Pipeline Partnership



Portage next steps

- Governance structure approved by CARL Board on January 25, 2016. A Steering Committee will be launched within two months to guide Portage over the next two years and to provide advice on an ongoing governance model and funding for Portage.
- Launch of the Portage website at the end of February.
- Additional Expert Groups to be formed.
- We will seek further partners in developing RDM national platform services.
- We will continue to consult and work with stakeholders to find areas in which to collaborate.

Thanks for your attention