

2012-05-17

NYU Bobst Library Renovation: Spaces for Intellectual Productivity

Covert-Vail, Lucinda

Covert-Vail, L. "NYU Bobst Library Renovation: Spaces for Intellectual Productivity". Presented at Designing Libraries for the 21st Century, May 16-18. 2012, University of Calgary, Calgary, Alberta, Canada.

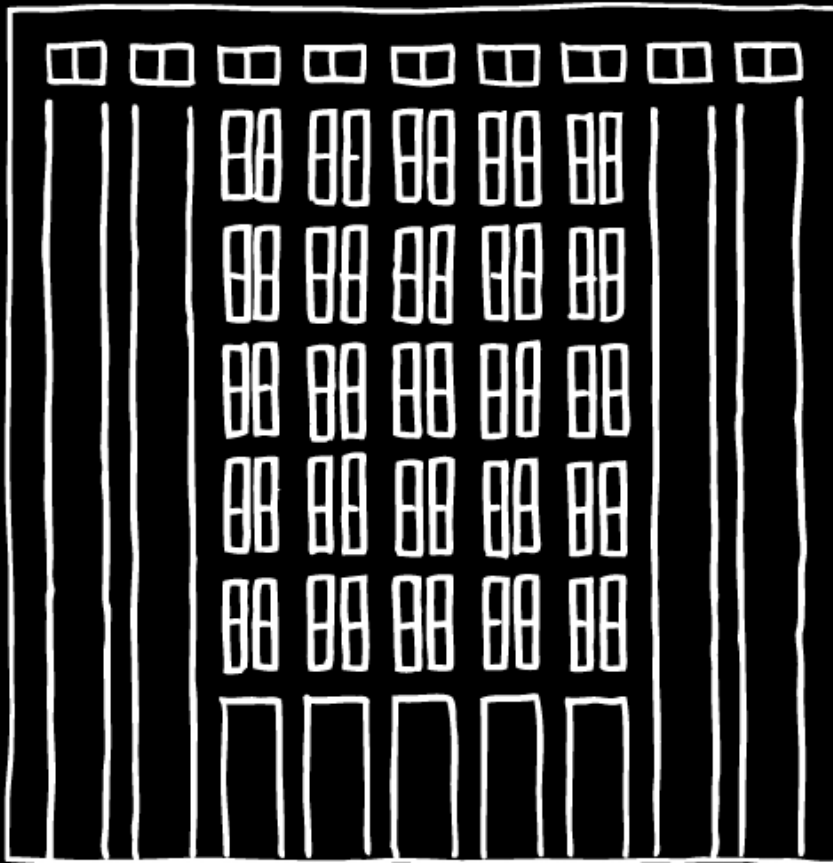
<http://hdl.handle.net/1880/49078>

Downloaded from PRISM Repository, University of Calgary

NYU Bobst Library Renovation: Spaces for Intellectual Productivity

Lucinda Covert-Vail, NYU Division of Libraries

NYU Bobst Library



ENROLLMENT

Undergraduate: 20,000

Graduate: 18,000

ARCHITECTS

Philip Johnson/Richard Foster

Alspector Architecture (renovations)

TIMELINE

1973: Building opened

2004: Phase I renovation
(LLs & 1st floor)

2010 & 2012: Phase II renovation
(Research Commons)

Strategies identified in our 21st century library study

Improve spaces for scholarly work;
create more spaces and mechanisms for inspiration

Enable collaboration and connections within and
across disparate disciplines

Expand services beyond traditional conceptions of
the library

Make the discovery process more powerful

Strategies stemming from our LibQual survey

Focus library facilities improvements on students, especially grad students

Focus library service improvements on faculty

Give high priority to “information control”

Assessing user needs

User centered design with graduate students

Tools used: charrettes, focus groups, lightning surveys, observations, transcripts

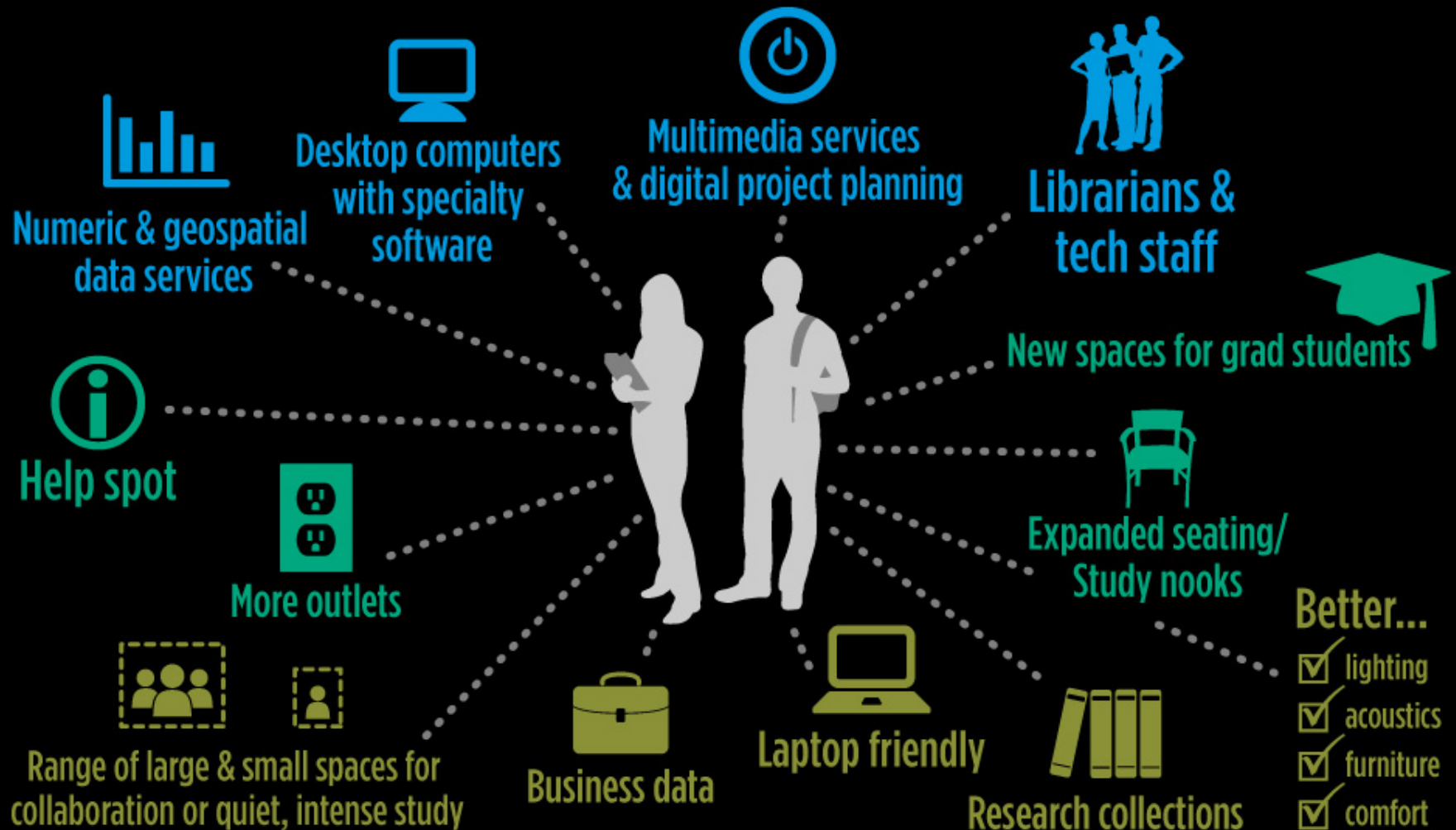
Identified graduate student “life cycle” and raw metrics to create spaces based on a continuum of needs

Intensive work with librarians and technologists

Identified service overlaps, gaps and challenges

Reconceptualization and more holistic service delivery model

Surroundings, Stimuli & Community: 21st Century Research Commons



Research Commons

portfolio of spaces

Research Hub: Services, technology, interactions with experts, help spot

Graduate Exchange: Informal “water cooler,” decompress, exchange ideas, serendipity, interdisciplinary

Dissertation Writers Rooms: Subscribed spaces for intense concentration, shared workspace, mobile storage

We need to think about
how people work.



It is different from a lounge.



Wireless
connectivity

The image shows a woman with dark hair tied back, wearing a blue patterned sweater, sitting in a black ergonomic office chair. She is working on a silver laptop on a dark grey desk. The desk is cluttered with various items: a red folder, a white coffee cup, a clear water bottle, a black smartphone, a blue pen, and some papers. A yellow double-headed arrow indicates the width of the desk as 48 inches. Another yellow double-headed arrow indicates the depth of the desk as 28 inches. A green wireless signal icon is in the top left corner. Three pink arrows point to the underside of the desk, highlighting the space for outlets. The background shows a wooden staircase and a bookshelf.

Ergonomic
Aeron chairs

Plenty of outlets
for multiple devices

Lots of space
for stuff

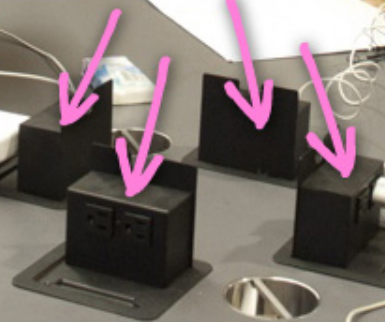
People need spaces to
work alone and with others
in multiple ways.

*Design dictates
behavior*



Pleasant lighting

*Desktop
power outlets!!!*



Quiet

Group

Individual



*Carpeted floors
(absorb sound)*

Open

Low buzz



Grad-only

Secluded



Low-tech informal group work

Reservable

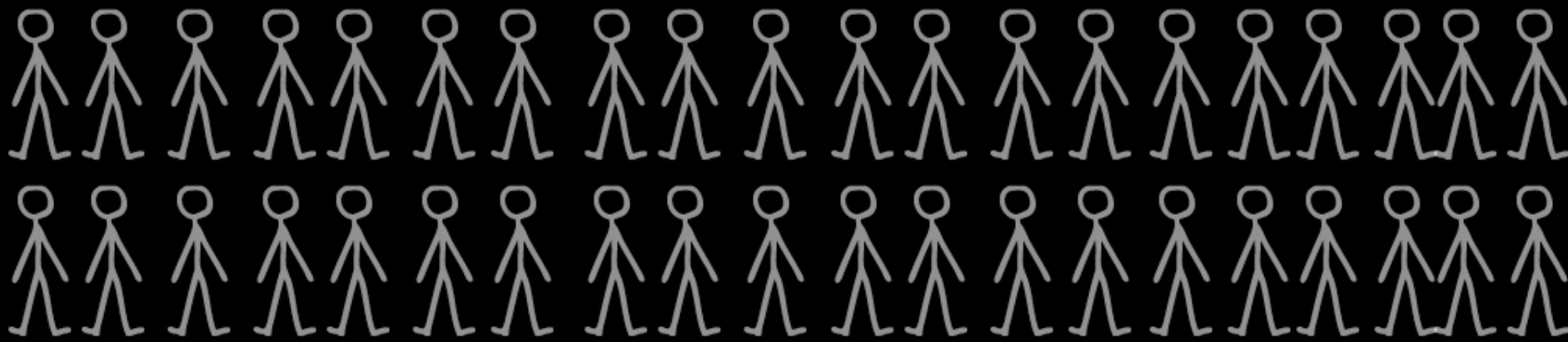
Soundproof



High-tech group work

Results:

Dramatic increase in use of
Bobst Library since FY2006

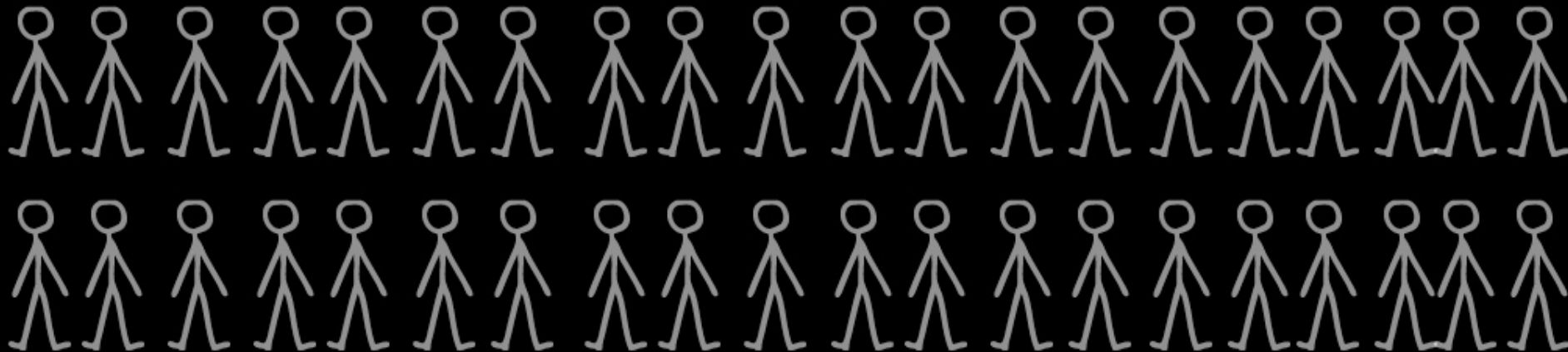


Occupancy rate: Up 66%

Spring 2006: 53%

Spring 2010: 78%

Spring 2011: 81% (after addition of 438 seats)



Moving our strategic objectives forward



Framework and rationale for future expansion

Vocabulary of key features, structures, and services

Ongoing assessment

Ability to work across NYU...

- libraries and global sites
- architects and planners
- housing, student services, schools