



**UNIVERSITY OF
CALGARY**

University of Calgary

PRISM: University of Calgary's Digital Repository

Research Centres, Institutes, Projects and Units

E-Health Resource Repository

2001-10

Communities of Practice and Learning: Are large-scale deployments feasible?

Siedlecki, Basia; Jennett, Penny Dr.

Siedlecki Basia and Jennett Penny Dr. 2001. Communities of Practice and Learning: Are large-scale deployments feasible? Presented by Basia Siedlecki at the Canadian Society of Telehealth conference in October 2001.

<http://hdl.handle.net/1880/43108>

Presentation

Downloaded from PRISM: <https://prism.ucalgary.ca>

Communities of practice and learning: are large-scale deployments feasible?

Basia Siedlecki

Dr. Penny Jennett

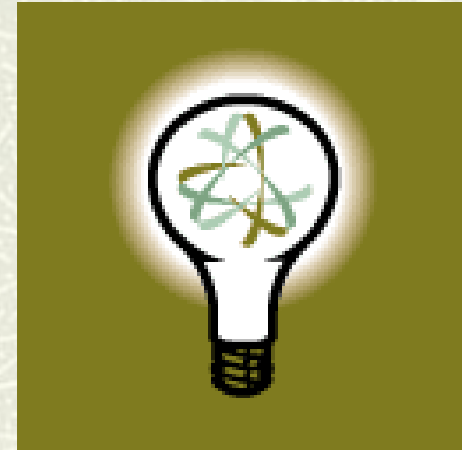


UNIVERSITY OF
CALGARY



Overview

- # Operational definitions
- # Past research
- # Theory
- # Evaluation
- # Large scale deployments: challenges and advantages
- # Future research



Definitions

- # Lifelong learning
 - Medical continuum
- # E-learning
- # Decision Support Systems
 - Embedded
 - Software
- # Interoperability
 - Technical
 - Procedural
 - Human
- # Communities of practice and learning



Definition

E-learning

- 2 models

- Corporate:

- Group/team work valued
- Goal oriented (patient centered)
- Process driven (not occasional)

- Education:

- Often focused on individual
- Process oriented (learner centered)
- Finite (not integrated)



Past Research

Interoperability

- ARC
 - Technical
- BELLE
 - Technical and content
- Portal technologies

Physician information needs

- Just-in-time
- Intentional knowledge building



Past Research (cont'd)



- # Pedagogies that work in group contexts
 - Technologies in teaching/learning
 - Constructivist learning/team learning/corporate learning
- # Organizational change and technology
 - Change theories/mechanisms
 - Technology mediated communications



Underlying theory

- # Reflective practice
- # Communities of practice
- # Teams in medicine/health
 - Patient care (may include patient)
 - Learning group



Evaluation



Evaluation

- Action research/action evaluation
- Portfolios
- Diaries

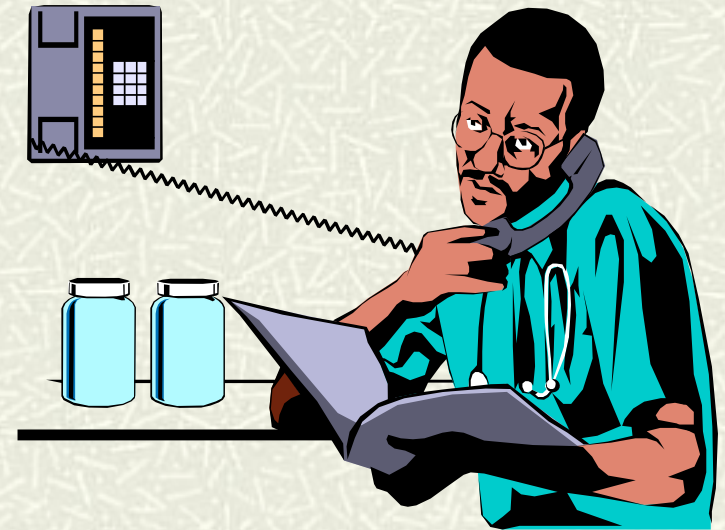
Just-in-time learning (at the point of care)

- Morbidity and mortality
- Decision support
- Error detection
 - Patient safety

Large Scale Deployment

Challenges:

- Existing structures
 - Licensing
 - Remuneration
- Undergraduate curricula
- Practice
- Expectations of practitioners (face-to-face instruction)



Large Scale Deployment (cont'd)

Challenges

- Interoperability
 - Security
 - Technical
 - Procedural
 - Human
 - Portability



Large Scale Deployment (cont'd)

Advantages:

- Corporate models
- Learning software
- Technology embedded in medical practice
- Research in education on technology mediated communication
- Infrastructure
- Communications technologies maturing



Large Scale Deployment (cont'd)

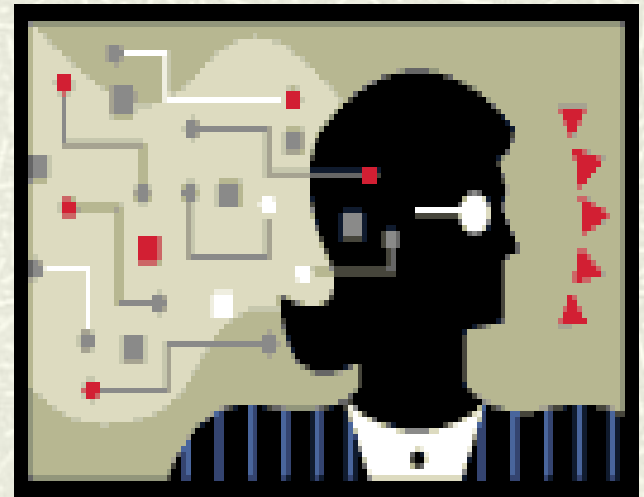
Advantages:

- Pilot studies/beta trials/small-scale implementations
 - Existing and developing co-operation
 - Patient centered culture
 - Evaluation models
-

Large Scale Deployment (cont'd)

In progress:

- Cultural change
- Technological sophistication
- Interoperability
- Bandwidth
- Pedagogy
- Motivation
- Cross-continuum applications



Future Research

- # Medical teams and technology
- # Delivery methods
 - Cross-disciplinary
 - Cross-continuum
- # Evaluation methods
 - Educational outcomes
 - Patient centered
 - Group functioning
 - Health outcomes



Conclusions

- # Operational definitions, theoretical context
 - # Literature review: pilot studies, small scale experiments
 - # Evaluation
 - # Issues around large scale deployments
-