

The needs of
researchers
have
changed



“..new
scholarly
infrastructure
that
incorporates
digital
content and
tools”



The Planning Study

Multidisciplinary Research Infrastructure: The Role of 21st Century Libraries

- Three days of workshops in November 2015
- 50 faculty members from 15 disciplines
- 4 external facilitators
- 3 external scholars
- Library staff and Research Services Office as observers

Findings

*Most Commonly
Identified Needs*

- Collaborative Spaces
- Data and repositories
- Digitization
- Expertise
- Funding for collaboration
- Metadata
- Skills Training
- Visualization



The Proposal

Academic Research and University Libraries: Creating a New Model for Collaboration

Funded by The Andrew W. Mellon Foundation

Goals

- Develop a platform for supporting research.
- Enhance campus-wide partnerships.
- Reposition libraries within the research enterprise.

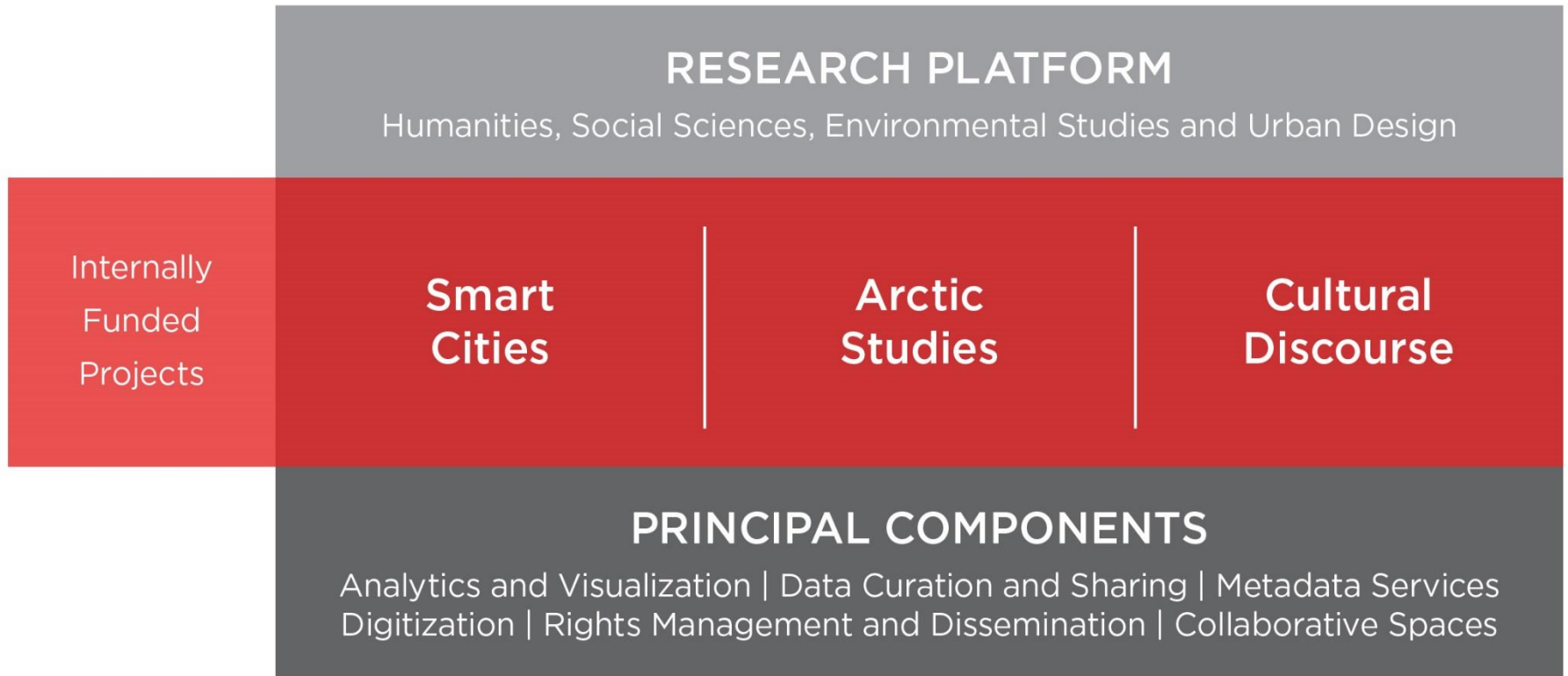


Research Platform

A suite of common services, technical infrastructure, and expertise will leverage economies-of-scale, strengthen scholarly capacity, and reposition the library within the research ecosystem.



The Platform will be designed through an iterative research process.



Process

- Internal granting competition
 - 2 rounds of grants, each round totaling \$200,000.
 - Round 1.
 - May 2017 Call for LOIs.
 - July 2017 Invitation to Full Proposal
 - Sept 2017 Subgrants awarded
 - Round 2 will start May 2018
 - Scoring criteria
 - 40% Concept
 - 30% Alignment with Platform
 - 30% Methodology, Feasibility & Budget

Process

- Advisory committee of **senior scholars and research administrators** from the University of Calgary to advise on the structure, format and process.
- Two evaluations by **external expert reviewers** after the completion of each grant cycle to consider outcomes and impact.

Applications

Smart Cities
Cultural Discourse
Arctic Studies

21 LOIs, 13 Proposals, 5 Underway

Applicant Team Disciplines:



UNIVERSITY OF
CALGARY

Outcomes

- Library staff develop a new understanding of research needs as defined by the scholars.
- Library better prepared to align resources and expertise with research as it is evolving today.
- Library administrators better able to make strategic decisions.



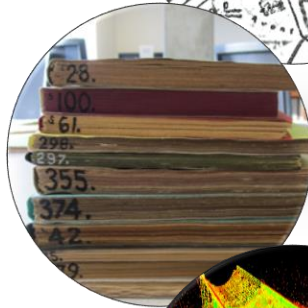
Projects



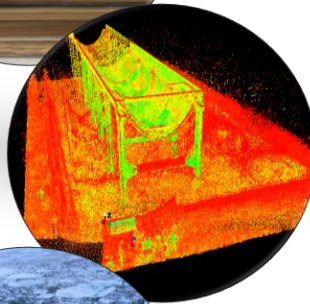
Open Data for a Smarter City



Mapping Urban Healthscapes



Paper Traces in Digital Environments



Digitally Preserving Alberta's Diverse Cultural Heritage



ArcticSensorWeb



Smart
Cities

Open Data for a Smarter City:

Creating a Data Infrastructure Pilot Initiative

Ryan Burns, Anthony Levenda, Victoria Fast, Byron Miller
Dean Curran, Steve Liang, Eliot Tretter, Alex Whalley

Geography, Geomatics Engineering, Economics

- Create collection of grassroots open data from community associations, non-profits, and researchers
- Work with library to launch a web portal complementary to Open Calgary portal
- Develop infrastructure for other data collections



UNIVERSITY OF
CALGARY



Paul Pival

Open Data for a Smarter City:

Creating a Data Infrastructure Pilot Initiative

Paul Pival

"I learned of a project ... that aimed to map the number of nearby churches or synagogues per capita in different parts of the city. ... However, the government in Argentina doesn't collect or doesn't publish this sort of data. As such, the guy working on the project turned to scraping a site with listings aimed at finding a place to worship. That's not government data, but it is data that tells you about the public."

- Eve Ahearn, Enigma Voyager



Paul Pival

Open Data for a Smarter City:

Creating a Data Infrastructure Pilot Initiative

Paul Pival

Partners

- Haysboro Community Association
- Calgary Community/Neighbourhood Services
- Calgary United Way
- Inglewood Community Association
- Federation of Calgary Communities Calgary Urban Project Society (CUPS)
- Hospice Calgary
- Calgary Public Library

Cybera & PolicyWise (data users)



Smart
Cities

Mapping Urban Healthscapes: Bringing Together Big Data and Empathic Cultural Maps in a Knowledge Transfer and Exchange Project

Suzanne Goopy, Tanvir Chowdhury, Mary O'Brien,
Gavin McCormack, Jonathan Chapman, Irina Charania,
Carla Ferreira

Nursing, Cumming School of Medicine, Werklund School of
Education, Languages, Linguistics, & Cultures

- Craft interactive tools and data targeted for urban planners, health experts, and community members
- Local unique case studies for education
- Bridge big data & cultural probe insights



UNIVERSITY OF
CALGARY



Mapping Urban Healthscapes: Bringing Together Big Data and Empathic Cultural Maps in a Knowledge Transfer and Exchange Project

Big Data and Small, or tiny, Data

Alix Hayden

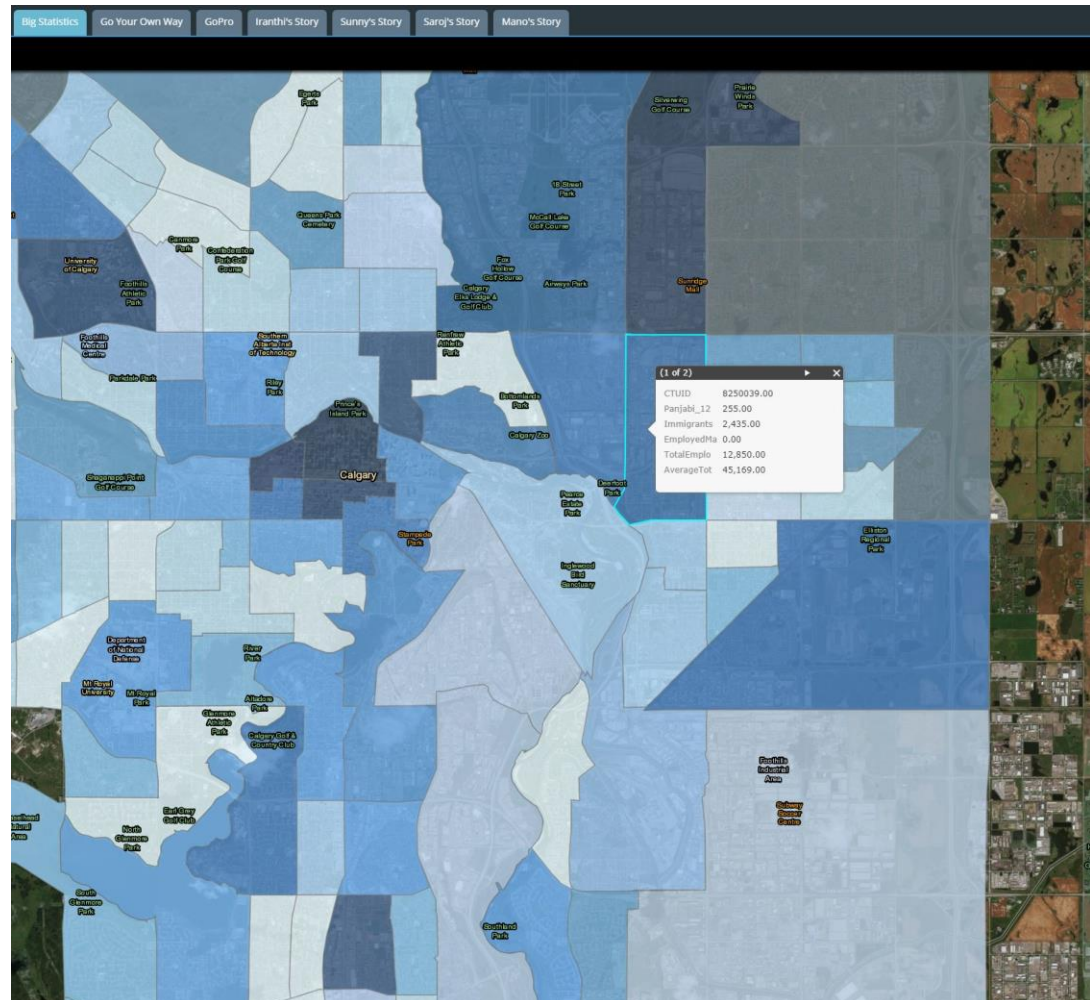




Mapping Urban Healthscapes:

Bringing Together Big Data and Empathic Cultural Maps in a Knowledge Transfer and Exchange Project

Alix Hayden





Alix Hayden

Mapping Urban Healthscapes: Bringing Together Big Data and Empathic Cultural Maps in a Knowledge Transfer and Exchange Project

Alix Hayden

New Opportunities for LCR

- Telling the story, and bringing to life our tiny data currently housed in our big data collections
- EMI Music Canada Archive
 - [Alan Lomax's Musical Recordings](#)
- Franklin's 24 letters, maps, photos, etc (AINA Collection)
 - [Lucas-Heaton Letters](#)



UNIVERSITY OF
CALGARY



Cultural
Discourse

Paper Traces in Digital Environments: Enhancing Analysis & Representation of Content and Materiality in Digitized Print Collections

Stefania Forlini, Uta Hinrichs

English, Computer Science

- Examine relationship between early Science Fiction (SF) literary content and paper types
- Expanding SF metadata with material information and computer generated text-analysis
- Digital access to collection and metadata



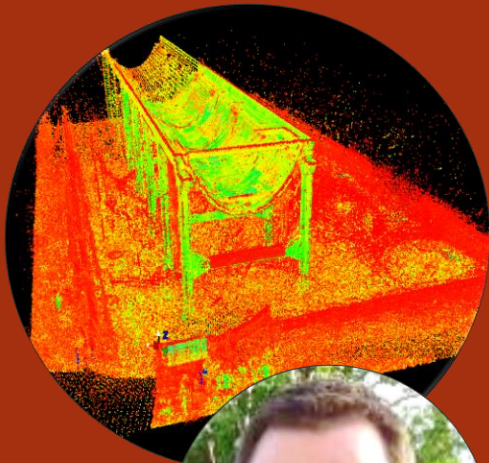
Rob
Alexander

Paper Traces in Digital Environments:

Enhancing Analysis & Representation of Content and Materiality in Digitized Print Collections

Rob Alexander

- New procedures to capture
- Incorporate Dave Brown into the project
- Explore limitations of our digital collections
- Explore better ways to share large datasets beyond LCR
- Student training & fitting projects into production



Digitally Preserving Alberta's Diverse Cultural Heritage

Peter Dawson, Derek Lichti, Denis Gadbois, Richard Levy, Alireza Forrokhi

Anthropology & Archaeology, Geomatics Engineering, Fine Arts, Environmental Design, Alberta Culture & Tourism

- Create a prototype open access archive for Alberta's digital heritage
- Virtual reality content for education & outreach
- Building information model (BIM) of the Brooks aqueduct

Smart
Cities

Cultural
Discourse

DIGITALLY PRESERVING ALBERTA'S DIVERSE CULTURAL HERITAGE

[Home](#)
[Explore](#)
[Map](#)
[Project Team](#)
[News](#)

McDougall United Memorial Church

The McDougall Memorial United Church is a one-storey building located on the north bank of the Bow River, roughly two kilometres east of Morley.

Where in Alberta: Canada

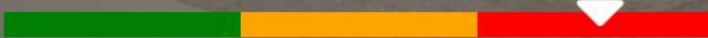
Field Documentation: June 1, 2017

Culture: Dutch, Irish

Historic Period: 1875

Latitude	Longitude	CDT	Datum Type
51.186951	-114.824684	GPS	NAD 83

Threat Level



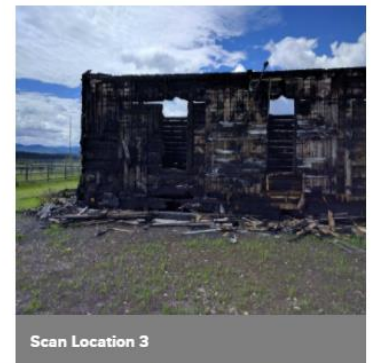
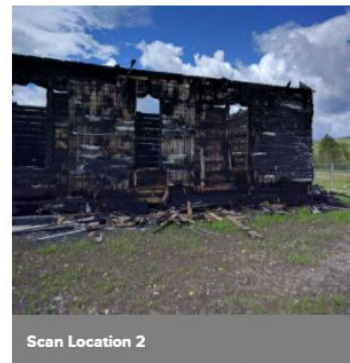
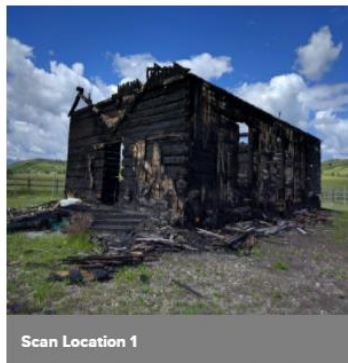
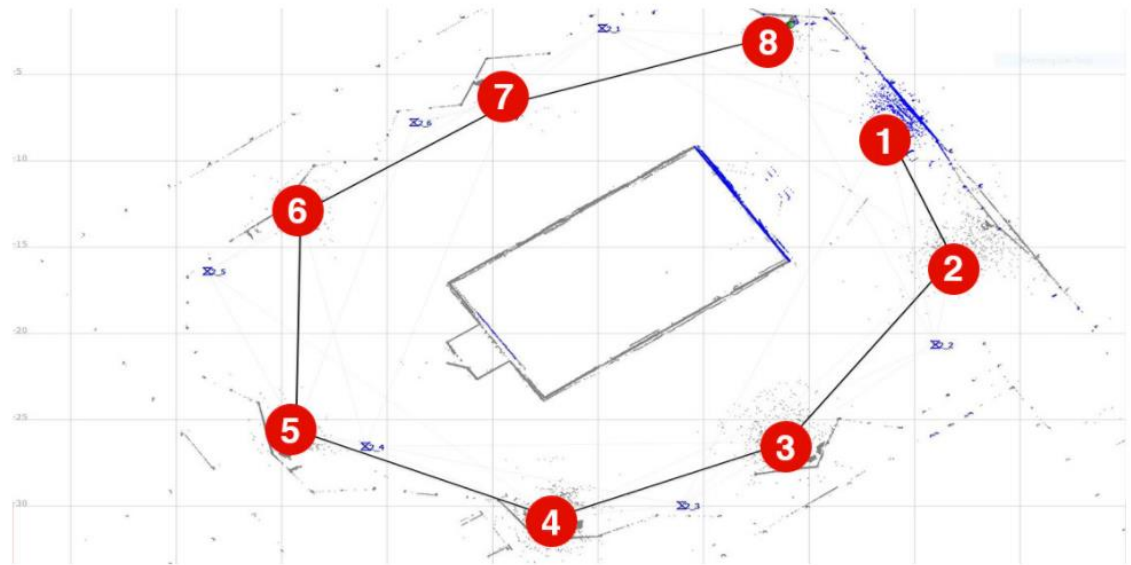
Background

[Photo Gallery](#)
[Map](#)
[Capture Techniques](#)

Digitally Preserving Alberta's Diverse Cultural Heritage

Ingrid Reiche

Scan Locations



Ingrid Reiche



UNIVERSITY OF
CALGARY



Arctic
Studies

ArcticSensorWeb: A Research Platform for Real-Time Dissemination of Arctic Data

Brent Else, Maribeth Murray, Steve Liang, Shawn Marshall, Shannon Vossepoel, James Badger

Geography, Anthropology & Archaeology, Arctic Institute of North America, Geomatics Engineering

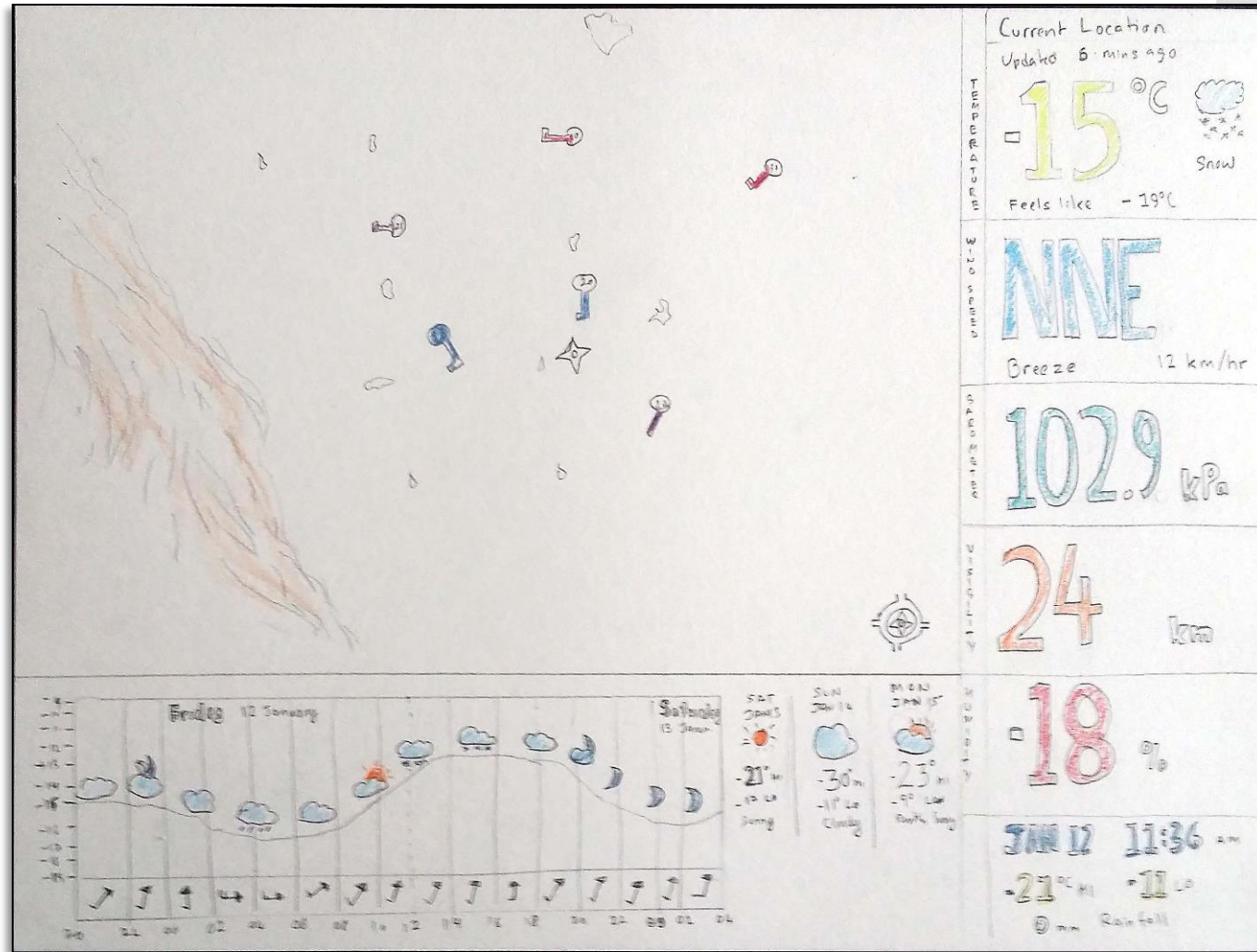
- Realtime web access to arctic sensor data
- Support for future data streams
- Data visualizations for Northern communities to use the data



UNIVERSITY OF
CALGARY



ArcticSensorWeb: A Research Platform for Real-Time Dissemination of Arctic Data





ArcticSensorWeb: A Research Platform for Real-Time Dissemination of Arctic Data

Renée Reaume



Welcome to the Polar Data Catalogue

The Polar Data Catalogue is a database of metadata and data that describes, indexes, and provides access to diverse data sets generated by Arctic and Antarctic researchers. The metadata records follow **ISO 19115** and **Federal Geographic Data Committee (FGDC)** standard formats to provide exchange with other data centres. The records cover a wide range of disciplines from natural sciences and policy, to health and social sciences. The PDC Geospatial Search tool is available to the public and researchers alike and allows searching data using a mapping interface and other parameters.

Please click on the [PDC Search map](#) below to start searching for datasets or [sign in to the PDC Input application](#) to contribute metadata or data to the Polar Data Catalogue.

The [PDC Lite Search](#) is also available for users with limited Internet speed.



Renée
Reaume



PDC METADATA
& DATA ENTRY