

CONNECTIVITY IN
RESEARCH

ALBERTA
GAMING RESEARCH
INSTITUTE



ANNUAL REPORT
2009



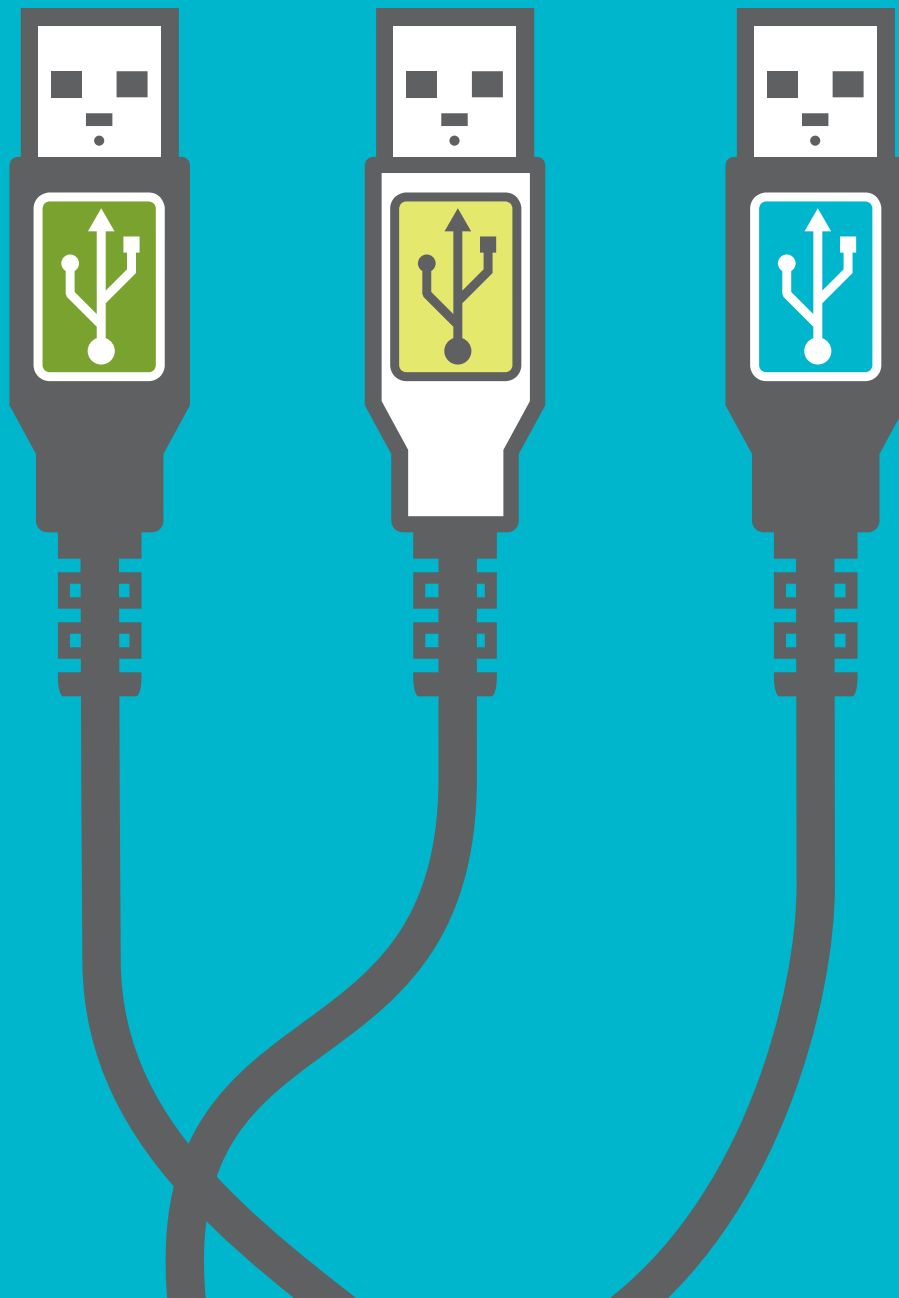
TABLE OF CONTENTS

2	Message from the Board Chair
3	Message from the Executive Director
4	Connectivity in Research
4	Connection #1: Connecting the results of scientific inquiry to public and provincial stakeholders
7	Connection #2: Connecting scholars at Alberta's universities to opportunities to develop expertise and leverage research funding
10	Connection #3: Connecting Alberta's research agenda to those of national and international research partners
11	Connection #4: Connecting best practices in research governance and administration
12	About the Alberta Gaming Research Institute
12	Vision
12	Mission
12	Core Purposes
12	Core Businesses
12	Institute Board
15	Audited Financial Statements
26	Board of Directors
28	Node Coordinators
29	Contact Information
29	Credits

For additional information on research projects or other Institute initiatives and events, see <http://www.abgaminginstitute.ualberta.ca>

*Making mental connections is our most crucial learning tool,
the essence of human intelligence; to forge links; to go beyond
the given; to see patterns, relationships, context.*

-Marilyn Ferguson





MESSAGE FROM THE BOARD CHAIR

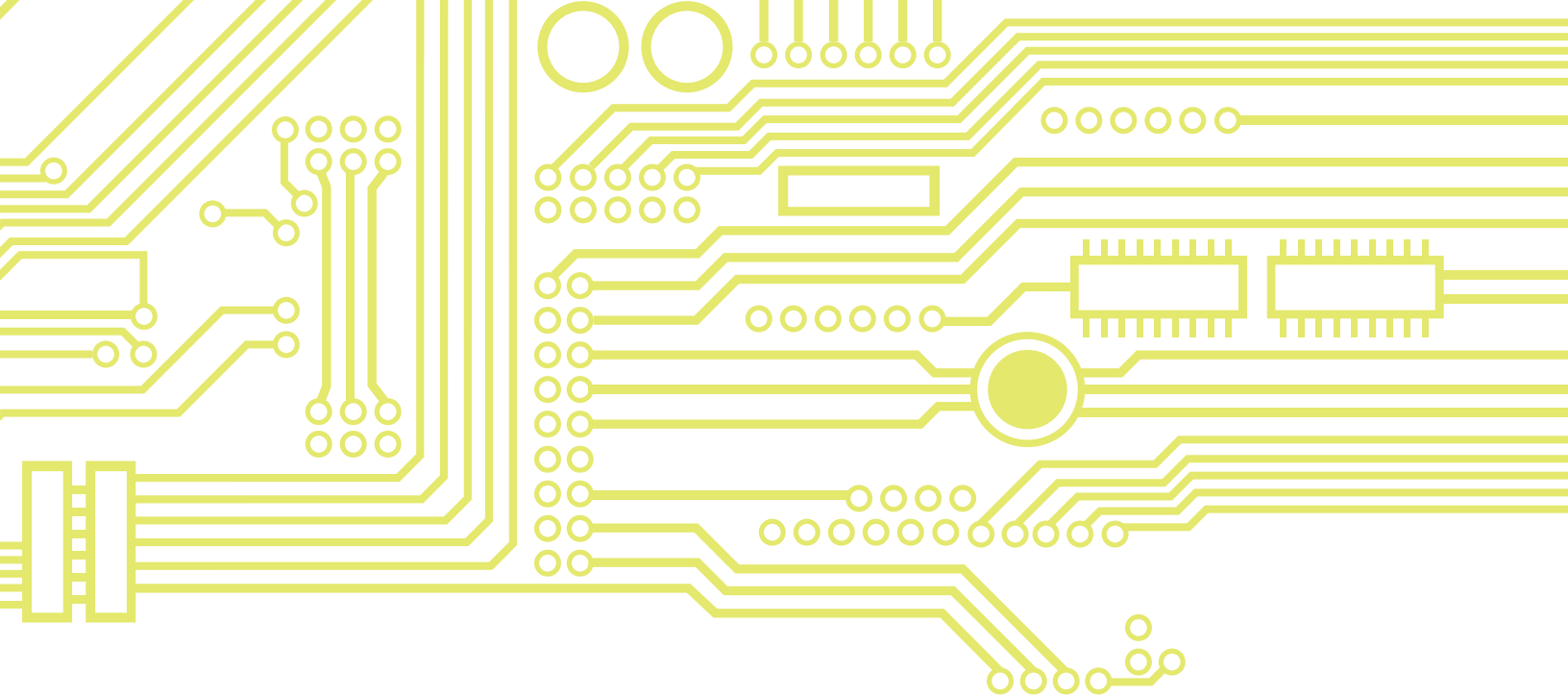
I am very pleased, as Board Chair of the Alberta Gaming Research Institute, to present you with the *9th Annual Report of the Alberta Gaming Research Institute* for the year ending March 31, 2009. In recognition of the number of research undertakings and events that rely on the talents and contributions of a range of expertise and participation of many investigators, we have selected the theme of 'connectivity in research' for this issue. Although this aspect of the Institute's research activity is not unique to 2008/09, we consider that it is important to focus on the 'value-added' benefits of supporting and emphasizing tri-university, multi-researcher, interdisciplinary and large scope projects as we enter our tenth year.

A number of the projects that involved intricate connections between and among experts were either initiated or continued in 2008/09. The Institute's '*Leisure, Lifestyle, Lifecycle Project*' (LLLP) continued and a 'second wave' of data collection was well underway. It began in 2006 and is a comprehensive examination of gambling habits among five different age cohorts of Albertans across a five-year period. Several journal articles and conference presentations were produced describing preliminary findings thanks to the efforts of the project's nine-member research team. The '*Social and Economic Impacts of Gambling in Alberta*' (SEIGA) study also officially got underway in 2008/09 and initial phases of the investigation were completed. These included a preliminary prevalence study and beginning of the data collection to assess the impacts of gambling from a variety of disciplinary perspectives. This high priority topic relies on the expertise of four researchers as well as the input of external agencies. Both of these large projects, as well as many other smaller ones, were undertaken in response to comments and suggestions gathered at annual stakeholder meetings. These meetings continue to be an useful consultative mechanism to assist in identifying research priorities and sharing research findings.

Thank you for your support and advice as we work toward maximizing research connections in the field of gambling to enhance the research knowledge base for the benefit of all Albertans.

Nady el-Guebaly, MD





MESSAGE FROM THE EXECUTIVE DIRECTOR

In addition to focusing on our large strategic initiatives in 2008/09, the Institute was also involved in 'connecting' with affiliated organizations that realized the truism that 'the whole is larger than the sum of its parts.' Institute representatives presented and participated in a number of interprovincial, national and international deliberations that focused on the means by which collaborative and joint projects can maximize the benefits of research investments.

Due to the varying availability of the Banff Centre, our annual conference venue, two conferences occurred within the same fiscal year – in early April 2008, we held our seventh which was entitled '*Gambling in Society: a Question of Balance*' and then in March 2009, the eighth one was themed '*Internet Gambling*.' Both were very well received and brought together the foremost academic experts in their respective fields, policy makers, treatment specialists and international delegates – providing innumerable opportunities to make research connections.

I am confident that Institute sponsored research is making a significant contribution to the ever-growing scientific knowledge in the field. It is a tribute to the commitment and dedication of our steadily increasing number of exceptional and world-class academic researchers who contribute locally, nationally and internationally. I also wish to acknowledge the financial support received from the Alberta Lottery Fund which permits the university-based Institute to facilitate high quality academic research.

As previously, I extend my appreciation for your endorsement and support of the work of the Alberta Gaming Research Institute. In recognition of the confidence vested in me, once again, I re-affirm my commitment to ensuring that the highest standards of research excellence are maintained. I welcome your comments on this Annual Report and look forward to our continuing affiliation.

Vickii Williams

CONNECTIVITY IN RESEARCH



CONNECTING THE RESULTS OF SCIENTIFIC INQUIRY TO PUBLIC AND PROVINCIAL STAKEHOLDERS

MAJOR GRANT FUNDING

The Institute contributes to the development of the knowledge base in gambling-related research in a number of ways. An annual 'call for proposals' is issued in May (with an end of June deadline) soliciting proposals from active researchers to address 'investigator identified' areas in need of research. The submissions are subjected to a rigorous peer review process which involves the critical review of proposals by external experts in related areas of research. This type of review process provides the most reliable means of ensuring that only the highest quality research submissions receive Institute funding.

In 2008/09, two 'new' major proposals were approved:

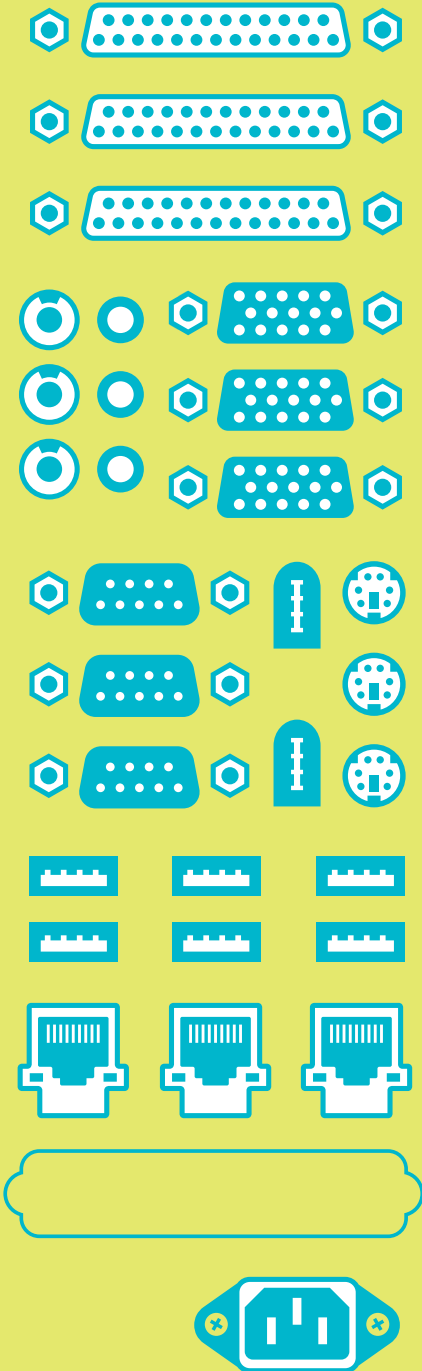
- Trauma and female problem gambling: A qualitative grounded theory study (Research Grant #50)
- Evaluating the psychometric performance of the Four Es Scale: A cross-cultural comparison of factors related to gambling behavior and mental health in Canadian and American college students (#51)

During the same period, the following major projects were completed:

- CRAFT (Community Reinforcement and Family Training) with problem gambling (#42)
- The Alberta Lottery Fund and funding amateur arts, sports, recreation, and professional sports: A study of public awareness and willingness to support (#43)
- Exploring offender gambling from prison through re-entry: A cross-national investigation (#44)
- The effects of ethnicity, participation in gambling and other leisure activities, and leisure satisfaction, on quality of life (#45)

Other major projects that were ongoing in 2008/09 included:

- Culture and gambling: Research on ethno-cultural minorities' involvement (#46)
- Acculturation and gambling: The case of mainland Chinese immigrants to Calgary, Alberta (#47)
- Risk and protective factors for problem gambling among urban aboriginals in Edmonton (#48)
- Conversations of change? Examining gamblers' help-seeking and change-sustaining conversations (#49)



STRATEGIC GRANT FUNDING

A second funding program is related to high-priority research investigations. These large-scale strategic initiatives are identified by the Board in consultation with Institute stakeholders. Since the commencement of this program in 2003-04, the Institute has funded two major initiatives that are exclusively Alberta-based.

The ***Leisure, Lifestyle, Lifecycle Project***, the largest ever sponsored by the Institute, was initiated in Spring 2006. Its primary aim is to discover the determinants of gambling and disordered gambling, what factors lead people to gamble in any form, and why some of them become problem gamblers. It is a five-year study that involves 1,808 Albertans. The second of a planned four data collection survey waves was completed in 2008/09.

The project's large, multidisciplinary research team has indicated that the development of a comprehensive biopsychosocial model of gambling behavior will assist in addressing questions related to the impact of gambling availability, legislative initiatives, prevention programs and the development of problem and responsible gambling programs.

The ***Social & Economic Impacts of Gambling in Alberta (SEIGA)***, a much-anticipated and high priority study was commenced on April 1, 2008. The primary purpose of the research investigation is to assess the costs and benefits of legalized gambling. Scientific evidence is expected to have utility in assisting provincial policy makers in their efforts to mitigate the negative impacts of gambling while maximizing its benefits.

As at March 31, 2009, the project was on schedule with background research and a population survey having been completed. Secondary data analysis is underway and additional primary data collection is being conducted. Three graduate students are employed on the project (Economics, Physical Education and Recreation, and Health Sciences) as well as a post-doctoral student in Economics.

The planned completion date for the project is July 31, 2010.

COMMUNICATING SCIENTIFIC KNOWLEDGE

The Institute encourages its funded investigators to share the research results from Institute-funded projects via publication in peer-reviewed scholarly journals and by presenting them at scholarly conferences.

Following is a list of related scholarly materials (articles, chapters and reports) published between April 1, 2008 and March 31, 2009:

- Anielski Management Inc. (2008). *The Socio-Economic Impact of Gambling (SEIG) Framework: An assessment framework for Canada: In search of the gold standard*. Prepared for the Inter-Provincial Consortium for the Development of Methodology to Assess the Social and Economic Impact of Gambling.
- Callan, M. J., Ellard, J.H., Shead, N. W., & Hodgins, D. C. (2008). Gambling as a search for justice: Examining the role of personal relative deprivation in gambling urges and gambling behavior. *Personality and Social Psychology Bulletin*, 34(11), 1514-1529.
- Crockford, D., Quickfall, J., Currie, S., Furtado, S., Suchowersky, O., & el-Guebaly, N. (2008). Prevalence of problem and pathological gambling in Parkinson's disease. *Journal of Gambling Studies*, 24, 411-422.
- Cunningham, J. A., Hodgins, D. C., & Toneatto, T. (2008). Problem gamblers' interest in self-help services [Letter]. *Psychiatric Services*, 59(6), 695-696.
- Currie, S. R., Hodgins, D. C., Wang, J., el-Guebaly, N., & Wynne, H. (2008). In pursuit of empirically based responsible gambling limits. *International Gambling Studies*, 8(2), 207-227.
- Currie, S. R., Hodgins, D. C., Wang, J., el-Guebaly, N., Wynne, H., & Miller, N. V. (2008). Replication of low-risk gambling limits using Canadian provincial gambling prevalence data. *Journal of Gambling Studies*, 24, 321-335.
- el-Guebaly, N., Casey, D. M., Hodgins, D. C., Smith, G. J., Williams, R. J., Schopflocher, D. P., & Wood, R. T. (2008). Designing a longitudinal cohort study of gambling in Alberta: Rationale,

- methods, and challenges. *Journal of Gambling Studies*, 24(4), 479-504.
- Hodgins, D. C., Ching, L. E., & McEwen, J. (2009). Strength of commitment language in motivational interviewing and gambling outcomes. *Psychology of Addictive Behaviors*, 23(1), 122-130.
- Hodgins, D. C., & Peden, N. (2008). Cognitive-behavioral treatment for impulse control disorders. *Brazilian Journal of Psychiatry*, 30, supplement 1, S31-40.
- Horch, J. D., & Hodgins, D. C. (2008). Public stigma of disordered gambling: Social distance, dangerousness, and familiarity. *Journal of Social and Clinical Psychology*, 27(5), 505-528.
- Piquette-Tomei, N., Norman, E., Dwyer, S. C., & McCaslin, E. (2008). Group therapy for women problem gamblers: A space of their own. *Journal of Gambling Issues*, 22, 275-296.
- Pulford, J., Bellringer, M., Abbott, M., Clarke, D., Hodgins, D., & Williams, J. (2009). Reasons for seeking help for a gambling problem: The experiences of gamblers who have sought specialist assistance and the perceptions of those who have not. *Journal of Gambling Studies*, 25(1), 19-32.
- Pulford, J., Bellringer, M., Abbott, M., Clarke, D., Hodgins, D., & Williams, J. (2009). Barriers to help-seeking for a gambling problem: The experiences of gamblers who have sought specialist assistance and the perceptions of those who have not. *Journal of Gambling Studies*, 25(1), 33-48.
- Ramp, W., & Badgley, K. (2009). Blood money: Gambling and the formation of civic morality. In Cosgrave, J. F., & Klassen, T. R. (Eds.), *Casino state: Legalized gambling in Canada* (pp. 19-45). Toronto: University of Toronto Press.
- Shead, N. W., Callan, M. J., & Hodgins, D. C. (2008). Probability discounting among gamblers: Differences across problem gambling severity and affect-regulation expectancies. *Personality and Individual Differences*, 45, 536-541.
- Shead, N. W., Hodgins, D. C., & Schark, D. (2008). Differences between poker players and non-poker-playing gamblers. *International Gambling Studies*, 8(2), 167-178.
- Smith, G. J., Hartnagel, T. F., & Wynne, H. (2009). Gambling-related crime in a major Canadian city. In Cosgrave, J. F., & Klassen, T. R. (Eds.), *Casino state: Legalized gambling in Canada* (pp. 161-191). Toronto: University of Toronto Press.
- Spiers, A., & Walker, G. J. (2009). The effects of ethnicity and leisure satisfaction on happiness, peacefulness, and quality of life. *Leisure Sciences*, 31(1), 84-99.
- Suurvali, H., Hodgins, D., Toneatto, T., & Cunningham, J. (2008). Treatment seeking among Ontario problem gamblers: Results of a population survey. *Psychiatric Services*, 59(11), 1343-1346.
- Toneatto, T., Cunningham, J., Hodgins, D. C., Adams, M., Turner, N., & Koski-Jannes, A. (2008). Recovery from problem gambling without formal treatment. *Addiction Research & Theory*, 16(2), 111-120.
- Van Brunschot, E. G. (2009, March). *Gambling and risk behaviour: A literature review*. Prepared for the Alberta Gaming Research Institute.
- Walker, G. J., Mason, D. S., Whitehead, J. C., & Johnson, B. (in press). The end doesn't always justify the means: Public support for funding amateur sports and recreation using Alberta Lottery Fund monies. *World Leisure Journal*.
- Williams, D.J. (2008). Offender gambling in prisons and jails: Is it hidden leisure experience? *Correctional Psychologist*, 40(3), 7-10.
- Wiebe, J., Wynne, H., Stinchfield, R., & Tremblay, J. (2007). *The Canadian Adolescent Gambling Inventory (CAGI) Phase II Final Report*. Submitted for the Canadian Centre on Substance Abuse.
- Following is a list of the contents of the Institute newsletter published between April 1, 2008 and March 31, 2009:

Issue 3, Volume 8 – February / March 2009

Calgary graduate student surveys First Nations gaming industry stakeholders / From the Institute Library... / 2008-09 Research Grant Awardees / Winter Term Graduate Student Scholarship Recipients

Issue 2, Volume 8 – December 2008 / January 2009

The integrity of game outcome in professional sports betting markets: An interview with Brian Soebbing / Internet Gambling Conference

Issue 1, Volume 8 – October / November 2008

Public lecture reviews effectiveness of problem gambling prevention initiatives / Institute names 2008-09 graduate student award recipients

Issue 6, Volume 7 - August / September 2008

Gambling and risk-related behaviour: An examination of differences between individuals / Banff Conference on Internet Gambling

Issue 5, Volume 7 - June / July 2008

The Institute's 'capacity-building' activities at each of its three partner universities

Issue 4, Volume 7 – April / May 2008

Highlights of the Institute's 7th Annual Institute Conference - Gambling in society: A question of balance



CONNECTING SCHOLARS AT ALBERTA'S UNIVERSITIES TO OPPORTUNITIES TO DEVELOP EXPERTISE AND LEVERAGE RESEARCH FUNDING

The Institute engages a variety of programs and activities to ensure that existing research capability is best used, and equally as important, works to ensure that new expertise is fostered and developed. A major component of this endeavor is the annual allocation of 'capacity-building' funds to each of the three Institute universities. These monies are provided for the research-related purposes of position funding, research development and research administration. Each of the partner universities has a designated 'node coordinator', a senior researcher in a specific area of gambling-related research, who serves to promote the development and expansion of gambling-related research at their host university as well as to consult and liaise with the Institute's administration and Board. On a rotational basis, node coordinators serve as program organizers for the Institute's annual conference.

RESEARCH INTERFACE

The three Alberta universities that comprise the Institute have coordinated their gambling research activities in order to build an effective and productive provincial research interface. This has allowed the Institute to take advantage of a range of existing expertise available at each university and maximize the value of research funding. Board members and node coordinators at each university work in partnership with their colleagues of the other universities and facilitate research activities and initiatives. Coordination of specific activities (e.g., administration, library services, etc.) takes place at a designated university.

Node Coordinator:
Dr. Garry Smith



UNIVERSITY
OF ALBERTA

- Gambling research activities are coordinated by **Dr. Garry Smith** at the Faculty of Extension. Dr. Smith has an active gambling research program related to policy studies. There are an additional 13 faculty researchers and graduate students involved in current Institute-funded investigations. An Institute-supported Economics of Gaming Research Chair is held by Dr. Brad Humphreys in the Department of Economics. Dr. Humphreys is also a co-principal investigator for the Social & Economic Impacts of Gambling in Alberta (SEIGA) project.
- The Institute's administrative "hub" is also located at the University of Alberta. Executive Director Vickii Williams and Administrative Assistant Leena Vanhala handle research administration, coordination and communication functions.

Node Coordinator:
Dr. David Hodgins



UNIVERSITY
OF CALGARY

- **Dr. David Hodgins** from the Department of Psychology coordinates Institute-related activities. His research specialty relates to the treatment of gambling problems and involves a significant cadre of graduate students. In addition, there are 25 faculty researchers, research assistants and graduate students involved in current Institute-funded investigations.
- Dr. David Casey is Coordinator of the Institute's Leisure, Lifestyle, Lifecycle Project (LLLP) 5-year longitudinal study of gambling behaviours. He is based at the University of Calgary and works in partnership with faculty members, student assistants and external stakeholders at each of the Institute universities.

Node Coordinator:
Dr. Robert Williams



UNIVERSITY OF
LETHBRIDGE

- The coordinator of gambling research is **Dr. Rob Williams** in the Faculty of Health Sciences. He organized and planned the program of speakers for the Institute's Conference 2009 on Internet gambling. Dr. Williams is involved in numerous gambling research investigations and is a co-principal investigator for the SEIGA Project. In total, there are a further 18 faculty researchers, research assistants and graduate students involved in current Institute-funded investigations.
- Institute Library and web site development activities are coordinated by Rhys Stevens at the University of Lethbridge Library. Funds are allocated to libraries at all three partner universities to purchase books, journals and e-resources in support of gambling research.



INSTITUTE LIBRARIAN AND INFORMATION SPECIALIST

Rhys Stevens is principally responsible for planning, developing and overseeing the Institute's library and information services. The administrative headquarters for these services is at the University of Lethbridge Library. His duties involve the selection and acquisition of materials published on gambling and gambling-related topics in an array of formats that include books, e-books, journals, government documents, audio-visual materials, graduate student theses & dissertations, and conference proceedings. Funds from the Institute Library collections budget are also shared with Libraries at the U. of Alberta and U. of Calgary in support of their gambling-related library collections.

The Institute Librarian also provides in-depth reference services to researchers and the general public. These services include responding to requests for information, the development of bibliographies, guides, newsletters, and literature reviews. Over the course of 2008/09, detailed responses were provided to 109 information requests. The Librarian also develops and maintains the Institute's website, provides daily news summaries as well as other innovative online applications. The Institute website is a key location for the dissemination of information about the Institute and its events. Included on the site is a vast array of material related to finding and using scholarly gambling research.

SCHOLARSHIP PROGRAM

In an effort to foster young researcher involvement in gambling-related research, a two-tiered (doctoral and graduate level) scholarship program was adopted in 2008/09.

The following six scholarships were awarded:

- "Relationships between cultural identification, substance abuse and problem gambling among urban Aboriginals in Edmonton", doctoral level scholarship, Cheryl Currie, School of Public Health, University of Alberta (Fall/Winter terms)

- "The efficiency of sports betting markets in Canada and Europe", doctoral level scholarship, Brian Soebbing, Physical Education and Recreation, University of Alberta (Fall/Winter terms)
- "The impacts the gaming industry has had on First Nations communities in Canada", graduate level scholarship, Josee Couture, Sociology, University of Calgary (Fall/Winter terms)
- "The use of casino gaming by Alberta non-profit organizations as a funding source", Scott Henwood, graduate level scholarship, Sociology, University of Calgary (Winter term)
- "Older women and gambling: An exploration of behaviours associated with gambling among women aged 45 and older", Lena Rinqvist, graduate level scholarship, Sociology, University of Calgary (Winter term)
- "Investigation of individual differences in risk-acceptance with a focus on special populations of high risk individuals" Sandeep Mishra, doctoral level scholarship, Psychology, University of Lethbridge (Fall/Winter terms)

SMALL GRANT PROGRAM

As a means of encouraging young investigators to undertake gambling-related research, the Institute awards 'small grants' research awards to a maximum of \$10,000 with one-year maximum length. These awards support foundational efforts (e.g., pilot projects, literature reviews, small surveys, etc.) to prepare investigators to engage more fully in future gambling-related research programs.

The following small grant was completed within the 2008/09 fiscal year:

- Pathological gambling: A window into the addicted brain (Dr. Matthew Tata)

The following new small grant was awarded in 2008/09:

- Private stigma of disordered gambling (Ms. Jenny Horch)



CONNECTING ALBERTA'S RESEARCH AGENDA TO THOSE OF NATIONAL AND INTERNATIONAL RESEARCH PARTNERS

The Institute collaborates, and forms research affiliations, with provincial, national, and international organizations and individual researchers to facilitate, conduct and promote gambling research. In some instances, inter-organizational and multi-jurisdictional initiatives have been jointly supported. In other cases, individual researchers are sought to enhance the scope and quality of Institute-sponsored projects. Other research affiliates are engaged to make topical presentations at the Institute's annual thematic conferences.

CONFERENCE 2009

On March, 27th and 28th, 2009 more than one hundred delegates arrived at The Banff Centre in Banff, Alberta to participate in the Institute's 8th annual conference on gambling research. The theme of the conference was "Internet Gambling" and, over the course of two days, attendees heard presentations from a distinguished roster of academics and government officials from around the globe. In addition to presentations and poster sessions, the conference afforded a valuable opportunity to establish connections with other educators, policy makers, regulators, and researchers involved in aspects of gaming and gambling.

Annie Gendron - Winner Best Conference Poster Award

A research poster by Annie Gendron from the Université du Québec à Trois-Rivières was judged as the best presented at Conference 2009. It was entitled, "Comparison of the profiles of young nongamblers, gamblers and Internet gamblers relative to psychological distress, severity of substances use and impulsiveness/risk taking."

CONFERENCE 2008

The Institute's 7th annual conference on gambling research was also held at the Banff Centre in Banff, Alberta on April 4th and 5th, 2008. Over the course of two days, a host of Canadian and international experts presented topics related to the conference theme of "Gambling in Society: A Question of Balance." Attendees were exposed to a range of interesting and thought-provoking research material primarily related to understanding the connections between gambling and public policy.

Conference Keynote: The Chase thirty years on: Reflections on the changing gambling scene

The conference keynote address was delivered by gambling research pioneer Dr. Henry Lesieur who reflected on his earliest interactions with the problem gamblers he met while working alongside them as a youth in Rhode Island. These seminal experiences put Lesieur on a path toward pursuing a doctoral thesis related to the experience of the problem gambler. His PhD thesis was published as a book entitled *The Chase* which eventually became a foundational work in the field.

Collaborative initiative that was completed in 2008/09:

- Canadian Problem Gambling Instrument Phase III (formerly: Adolescent Problem Gambling Index)

Collaborative initiative that continued in 2008/09:

- Canadian Problem Gambling Index (CPGI) Phase II – an interprovincial, interorganizational project that aimed to assess the research reliability of the CPGI which was originally developed in 2001

4

CONNECTING BEST PRACTICES IN RESEARCH GOVERNANCE AND ADMINISTRATION

The operations of the Institute are administered in a way that is effective, efficient and transparent. As in the previous fiscal years, cost accountability received continuous and serious attention and scrutiny. Only peer-reviewed and endorsed research projects were approved for funding. Bi-annual narrative and financial progress reports were required for each of the Institute-funded research grants as well as from the partner universities for the awarded capacity-building funds. Following review and approval by the Institute Board, current information on the status of the research projects was posted on the Institute website. The annual audit by the Office of the Auditor General (see enclosed 'Report of the Auditor General' and 'Financial Statements') further ensured the Alberta Gaming and Research Institute maintained sound systems of financial management and internal control over financial reporting.

ABOUT THE ALBERTA GAMING RESEARCH INSTITUTE:

VISION

An Institute that is internationally recognized for its contribution to the scientific knowledge base in gambling research

MISSION

To significantly improve Albertans' knowledge of how gambling affects society

CORE PURPOSES

The focus of the Institute is to facilitate and support excellent academic research that guides the development of effective public policy and contributes to developing the depth and breadth of scientific knowledge.

The Institute's core purposes are:

- 1 To expand the depth and breadth of scientific knowledge of gaming and gambling in the following four broad-based and overlapping domains:
 - a) Biopsychological and health-care
 - b) Sociocultural
 - c) Economic
 - d) Government and industry policy and practice
- 2 To promote or direct research in those priorities and areas identified as part of the Strategic Research plan
- 3 To sponsor peer-reviewed research of the highest academic quality and related to emergent gaming activities
- 4 To act as a clearing house for gaming research and as a gateway to research materials;
- 5 To act to facilitate the ready access to, and the development of, the applicable library collections of the Institute universities
- 6 To forge strong collaborative links with national and international scholars and organizations involved in gaming/gambling research and studies
- 7 To provide education about current knowledge through research publications and reporting of research results

The Alberta Gaming Research Institute partners with research-focused organizations and individuals for the purpose of improving knowledge about gambling and gaming practice. Its goals are achieved by improving research capacity at partner universities, facilitating knowledge transfer, and promoting strategic and collaborative initiatives. Multidisciplinary collaboration occurs within and between the Institute and Alberta's partner universities (i.e., University of Alberta, University of Calgary, and University of Lethbridge) as well as with national and international partners. Varied arrangements allow for research expertise on specific projects and initiatives to be maximized. Research capacity is improved through conference sponsorship, support of focused research initiatives, and the dissemination of information through print and electronic media.

The Institute is located at the University of Alberta, where the Institute's Executive Director and administrative staff coordinate the operations of the Institute. The Institute librarian is located at the University of Lethbridge.

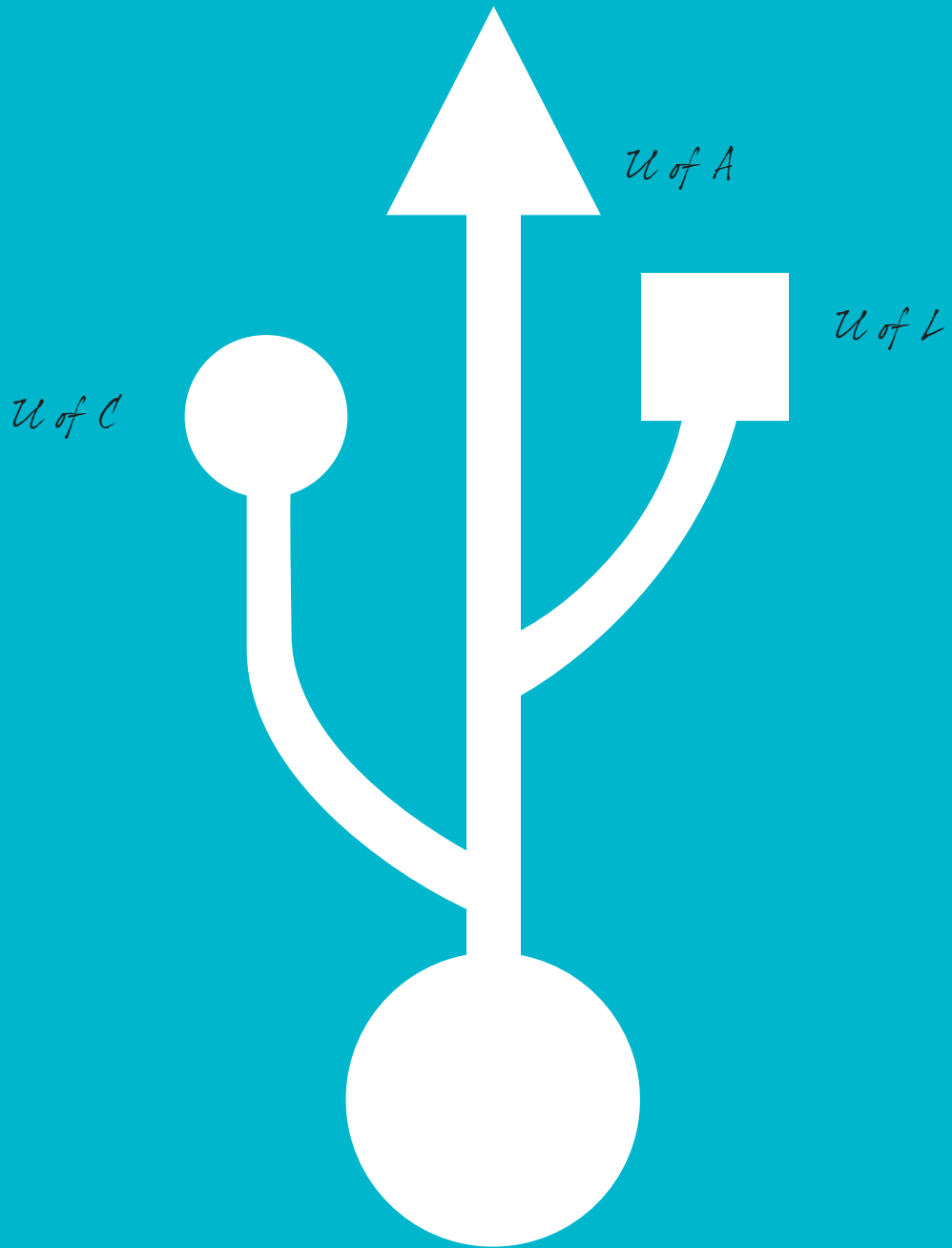
CORE BUSINESSES

The Alberta Gaming Research Institute has four core businesses:

- 1 Develop and promote gambling-related research and disseminate results
- 2 Develop and sustain gambling-related research infrastructure
- 3 Establish and encourage national and international gambling-related research linkages
- 4 Establish and efficiently conduct gambling-related research governance and administration

INSTITUTE BOARD

The Institute is governed and managed by a seven member board consisting of two directors appointed by and from each partner university and an 'external member' appointed by the Alberta Solicitor General and Minister of Public Security. The Executive Director serves in an advisory role on the Board.



Alberta Gaming Research Institute



ALBERTA GAMING RESEARCH INSTITUTE FINANCIAL STATEMENTS

AS AT MARCH 31, 2009



16	Auditor's Report
17	Statement of Financial Position
18	Statement of Operations
19	Statement of Cash Flows
20	Notes to the Financial Statements
25	Schedule of Expenses

AUDITOR'S REPORT

TO THE BOARD OF DIRECTORS OF THE ALBERTA GAMING RESEARCH INSTITUTE

I have audited the statement of financial position of the Alberta Gaming Research Institute as at March 31, 2009 and the statements of operations and cash flows for the year then ended. These financial statements are the responsibility of the Institute's management. My responsibility is to express an opinion on these financial statements based on my audit.

I conducted my audit in accordance with Canadian generally accepted auditing standards. Those standards require that I plan and perform an audit to obtain reasonable assurance whether the financial statements are free of material misstatement. An audit includes examining, on a test basis, evidence supporting the amounts and disclosures in the financial statements. An audit also includes assessing the accounting principles used and significant estimates made by management, as well as evaluating the overall financial statement presentation.

In my opinion, these financial statements present fairly, in all material respects, the financial position of the Institute as at March 31, 2009 and the results of its operations and its cash flows for the year then ended in accordance with Canadian generally accepted accounting principles.

Edmonton, Alberta

August 20, 2009

Originally signed by

Fred J. Dunn, FCA

Auditor General

Note: The official version of this Report of the Auditor General, and the information the Report covers, is in printed form.

ALBERTA GAMING RESEARCH INSTITUTE

STATEMENT OF FINANCIAL POSITION

AS AT MARCH 31, 2009

	2009	2008
Assets		
Cash and cash equivalents (Note 4)	\$ 2,600,876	\$ 2,724,070
Accounts receivable (Note 5)	815	1,138
Capital Assets (Note 6)	732	1,531
	<u>\$ 2,602,423</u>	<u>\$ 2,726,739</u>
Liabilities		
Accounts payable and deferred contributions	\$ 16,875	\$ 5,625
Net Assets		
Net assets at beginning of year	2,721,114	3,007,825
Net operating results	(135,566)	(286,711)
Net assets at end of year	<u>2,585,548</u>	<u>2,721,114</u>
	<u>\$ 2,602,423</u>	<u>\$ 2,726,739</u>

The accompanying notes and schedule are part of these financial statements.

Approved by the board:

<i>Original signed by C. Hosgood</i>	<i>Chair, Audit Committee</i>	<i>Aug 27, 2009</i>
_____ Signature	_____ Position	_____ Date
<i>Original signed by J. Fiske</i>	<i>Board Member</i>	<i>Aug 27, 2009</i>
_____ Signature	_____ Position	_____ Date

ALBERTA GAMING RESEARCH INSTITUTE STATEMENT OF OPERATIONS

FOR THE YEAR ENDED MARCH 31, 2009

	2009 Budget (Note 11)	2009 Actual	2008 Actual
Revenues			
Contributions from the Department of Solicitor General	\$ 1,500,000	\$ 1,500,000	\$ 1,500,000
Interest and Other Revenue	25,000	27,562	70,583
Total Revenues	1,525,000	1,527,562	1,570,583
Expenses (Schedule 1)			
Research	1,450,920	1,162,955	1,384,864
Infrastructure and Library	220,000	226,236	206,795
Research Linkages	50,000	23,652	32,546
Research Administration	250,000	250,284	233,089
Total Expenses	1,970,920	1,663,127	1,857,294
Net Operating Results	\$ (445,920)	\$ (135,566)	\$ (286,711)

The accompanying notes and schedule are part of these financial statements.

ALBERTA GAMING RESEARCH INSTITUTE
STATEMENT OF CASH FLOWS

FOR THE YEAR ENDED MARCH 31, 2009

	2009	2008
Operating Transactions		
Contributions from the Solicitor General	\$ 1,500,000	\$ 1,500,000
Interest and Other Revenue	27,562	70,583
Research Expenditures	(1,162,880)	(1,385,019)
Infrastructure and Library Expenditures	(216,425)	(219,914)
Research Linkages Expenditures	(23,652)	(37,165)
Research Administration Expenditures	(247,799)	(232,916)
Cash Flows used in Operating Transactions	(123,194)	(304,431)
Capital Transactions		
Leasehold improvements and purchase of capital assets	-	-
Cash Flows from Capital Transactions	-	-
Net Cash (Used) Provided	(123,194)	(304,431)
Cash and cash equivalents, Beginning of Year	2,724,070	3,028,501
Cash and cash equivalents, End of Year	\$ 2,600,876	\$ 2,724,070

The accompanying notes and schedule are part of these financial statements.

ALBERTA GAMING RESEARCH INSTITUTE

NOTES TO THE FINANCIAL STATEMENTS

MARCH 31, 2009

Note 1 Authority and Reporting Entity

The Alberta Gaming Research Institute (the Institute) is an unincorporated organization. It is a research consortium comprised of the University of Alberta, the University of Calgary, and the University of Lethbridge (the Institute Universities). Relations between the Institute and the Government of Alberta are defined in an Agreement between the Institute Universities and the Alberta Government dated April 1, 2006. The Institute is directed by a Board comprised of seven members including two appointees (senior administrators and researchers) from each of the three Institute Universities in addition to a representative who is appointed by the Solicitor General and Minister of Public Security.

As required under the Agreement, the Institute reporting entity for the purpose of these financial statements is that portion of Institute operations funded by the Department of Solicitor General and Public Security. The Institute Universities contribute certain services and supplies, including research and administrative personnel and services, to the consortium. The fair value of these contributions, and the cost of these services and supplies, is not reflected in these financial statements.

Note 2 Purpose

The purpose of the Institute is to:

- expand the breadth and depth of scientific knowledge into gambling;
- provide education about current knowledge through research publications and reporting of research results;
- provide research related to emergent gaming activities;
- act as a clearinghouse for literature related to gambling research; and,
- forge strong collaborative links with national and international scholars and organizations involved in gaming/gambling research and studies.

Note 3 Summary of Significant Accounting Policies and Reporting Practices

REVENUE

All revenues are reported on the accrual basis of accounting. Cash received for which goods or services have not been provided by year end is recorded as deferred revenue and included in accounts payable.

EXPENSES

Grants are recorded as expenses when all the terms and conditions of eligibility have been met and the Institute has authorized payment of the grant.

ASSETS

Capital assets are recorded at historical cost less accumulated amortization. Capital assets are amortized on a straight-line basis over their estimated useful lives at the following annual rates:

Furniture and equipment	20%
Computer equipment	33 1/3%
Leasehold improvements	Over lease term

LIABILITIES

Liabilities represent all financial claims payable by the Institute at the fiscal year end.

NET ASSETS

Net assets represent the difference between the book value of assets held by the Institute and its liabilities.

FAIR VALUE

Fair value is the amount of consideration agreed upon in an arm's length transaction between knowledgeable, willing parties who are under no compulsion to act. Due to their short-term nature, the fair values of cash, accounts receivable and accounts payable and accrued liabilities are estimated to approximate their book values.

INTELLECTUAL PROPERTY

Intellectual property rights with respect to all research conducted with the financial support, or under the auspices, of the Institute are governed by the policies of the Institute University with which the researcher is affiliated. These rights do not accrue directly to the Institute and are not recognized in these financial statements. The Government of Alberta and the Institute Universities are entitled to freely use and copy, other than for commercial purposes, any intellectual property so created.

Note 4 Cash and cash equivalents

Cash and cash equivalents is held in trust by the University of Alberta and consists of short-term investments comprised primarily of certificates of deposit, guaranteed investment certificates, government treasury bills and commercial paper with a maturity between 90 days and one year. Interest earned on the Institute's cash balance is credited to the Institute and is reflected in these statements. For the 2009 fiscal year ending March 31, 2009, the average effective yield was 1.19% (2008: 3.02%). Due to the short-term nature of the investments, the carrying value approximates fair value.

Note 5 Accounts Receivable

	2009	2008
Airfare overcharge	\$ 28	\$ 75
Conference sponsorship	750	-
Stationery credit	37	1,063
	<u>\$ 815</u>	<u>\$ 1,138</u>

Note 6 Capital Assets

	2009			2008
	Cost	Accumulated Amortization	Net Book Value	Net Book Value
Computer equipment	\$ 2,396	\$ 1,664	\$ 732	\$ 1,531
Furniture and equipment	1,222	1,222	-	-
Leasehold improvements	9,566	9,566	-	-
Total	<u>\$ 13,184</u>	<u>\$ 12,452</u>	<u>\$ 732</u>	<u>\$ 1,531</u>

Note 7 Grants to Institute Universities

Grants are provided to the Institute Universities for capacity building, nodal research development, library and collections, and research node administration for gaming related operations. The following table provides an accounting for the grant funds received, and amounts spent by the Institute Universities, to the year-end. Any unspent funds held by an Institute University at the conclusion of these programs or activities will be returned to the Institute.

	2009				2008
	University of Alberta	University of Calgary	University of Lethbridge	Total	Total
Opening balance	<u>\$ 318,694</u>	<u>\$ 158,995</u>	<u>\$ 108,301</u>	<u>\$ 585,990</u>	<u>\$ 472,938</u>
Funding					
Capacity building	100,000	100,000	100,000	300,000	300,000
Economics position	85,000	-	-	85,000	63,750
Nodal research development	30,000	30,000	30,000	90,000	90,000
Library and collections	-	-	150,000	150,000	150,000
Research node administration	15,000	15,000	15,000	45,000	45,000
	<u>230,000</u>	<u>145,000</u>	<u>295,000</u>	<u>670,000</u>	<u>648,750</u>
Total Funding Available	548,694	303,995	403,301	1,255,990	1,121,688
Actual Expenditures	<u>(150,151)</u>	<u>(110,113)</u>	<u>(300,178)</u>	<u>(560,442)</u>	<u>(535,698)</u>
Unexpended Funds	<u>\$ 398,543</u>	<u>\$ 193,882</u>	<u>\$ 103,123</u>	<u>\$ 695,548</u>	<u>\$ 585,990</u>

The balance of unexpended funds represents funding for new and continuing projects.

Note 8 Commitments

The Institute has the following commitments:

Year	Research Grants ^(a)	Lease ^(b)	Economics position ^(c)	Scholarships ^(d)	Total
2010	\$ 498,156	\$ 12,818	\$ 85,000	\$ 30,500	\$ 626,474
2011	99,204	-	85,000	-	\$ 184,204
2012 and after	-	-	276,250	-	\$ 276,250
Total	\$ 597,360	\$ 12,818	\$ 446,250	\$ 30,500	\$ 1,086,928

(A) RESEARCH GRANTS

The Institute has three types of granting programs. In response to an annual call for proposals for major grants (maximum of \$80,000/annum for up to three years to total of \$160,000) and open application period for small (developmental) grants (maximum of \$10,000 for up to one year), the Board approves researcher identified initiatives.

Upon approval of a major or small research grant and receipt of confirmation of any necessary ethics or other approvals from the host Institute University's Research Services Office, the Institute authorizes payment of 80% of the first year approved award. The remaining 20% is withheld pending satisfactory interim reporting by the principal investigator/researcher. For these types of awards extending beyond one year, authorization of subsequent period amounts is subject to satisfactory reporting and funding availability. Commitments for these awards include the balance of the approved grant awards, subsequent period amounts, and any other approved grant requests for which the researcher has not yet met all of the eligibility criteria.

(B) LEASE

The Institute entered into a lease with the University of Alberta for the period July 1, 2003 to March 31, 2006. To increase accessibility and accommodate the increased business activity of the Institute, effective April 1, 2004, the lease was transferred (with no penalty) to a new campus location (\$12,818/annum payable at \$1,068/month with first and last month of lease due on April 1, 2004). The Letter of Understanding regarding this move was signed on January 22, 2004 and necessary space improvements and computer technical changes were contracted. The Institute renewed the lease for the period April 1, 2009 to March 31, 2010 (with a renewal option).

(C) ECONOMICS CHAIR

Subject to specific conditions being met, on March 24, 2004, the Board approved a total of \$595,000 payable at the rate of \$85,000/annum for seven years to support the establishment of a research position in the Department of Economics at the University of Alberta. An appointment was made on July 1, 2007.

(D) SCHOLARSHIP AND RESEARCH ALLOWANCE AWARDS

In the interest of enhancing new research capacity, the Board implemented a two-level scholarship and research allowance award program effective September 2008 for the Fall 2008/Winter 2009 terms. Graduate level scholarship awards are in the amount of \$13,000 with an additional or separate research allowance award of

\$3,000. Doctoral students receive an annual maximum scholarship of \$20,000 with a research award allowance of \$5,000.

Note 9 Economic Dependence

The Institute receives its principal funding from the Department of Solicitor General and Public Security. The five year agreement between the Alberta Government and the Institute which expires March 31, 2011 provides funding of \$1,500,000 per annum. The Institute's ability to maintain viable operations is dependent upon continued support from the Alberta Government. Permission has been obtained from the Department of Solicitor General and Public Security to continue the trust account until March 31, 2011.

Note 10 Related Party Transactions

During the year, there were no related party transactions.

Note 11 Budget

The 2008/2009 budget was approved by the Institute's Board of Directors on December 11, 2007.

ALBERTA GAMING RESEARCH INSTITUTE
SCHEDULE OF EXPENSES
 FOR THE YEAR ENDED MARCH 31, 2009

SCHEDULE 1

	2009 Budget	2009 Actual	2008 Actual
Research			
Grant competition/strategic research (1)	\$ 864,920	\$ 647,008	\$ 931,114
Position and developmental funding (2)	496,000	425,947	363,750
Nodal research development (3)	90,000	90,000	90,000
	<u>1,450,920</u>	<u>1,162,955</u>	<u>1,384,864</u>
Infrastructure and Library			
Library and collections (4)	150,000	150,000	149,931
Events, colloquia (5)	25,000	31,236	11,864
Research nodes (6)	45,000	45,000	45,000
	<u>220,000</u>	<u>226,236</u>	<u>206,795</u>
Research Linkages			
Communications (7)	30,000	20,073	32,546
Exchanges (8)	20,000	3,579	-
	<u>50,000</u>	<u>23,652</u>	<u>32,546</u>
Research Administration			
Personnel costs (9)	180,000	204,020	161,572
Contract services (10)	10,000	-	-
Administrative hub (11)	60,000	46,264	71,517
	<u>250,000</u>	<u>250,284</u>	<u>233,089</u>
Total Expenses	<u>\$ 1,970,920</u>	<u>\$ 1,663,127</u>	<u>\$ 1,857,294</u>

Note 1 Includes annual research grant competition and Board identified areas of strategic, interjurisdictional, and interorganizational collaborative research.

Note 2 Grants to Institute Universities (\$100,000/university/year) to attract research scholars, small grant developmental funding, scholarship and research allowance awards and support (\$85,000 held centrally) for targeted position (economics).

Note 3 Grants to Institute Universities (\$30,000/university/year) to develop internal research expertise.

Note 4 Grant to the University of Lethbridge to build and maintain a special collection of gambling publications at the consortium universities. The grant also provides funding for specialized information services to interested parties on gambling and gaming matters, development and maintenance of the Institute website, and funding for a junior grade professional librarian.

Note 5 Supports program of formative and summative learning events and forums. Includes cost of an annual conference bringing together Institute associates, topical experts, and other interested persons.

Note 6 Costs associated with administering node operations including local/rotating board meetings, internal and administrative support.

Note 7 Includes print materials and promotional broadcasts, annual report development, writing, and production costs, and conference attendance by Institute representatives to facilitate information dissemination.

Note 8 Includes support for Alberta scholars and experts to travel to other locales to investigate gambling-related matters as well as the travel of national and foreign scholars and experts to Alberta to assist with Institute research.

Note 9 Salary and benefits compensation (Executive Director and administrative support).

Note 10 Special project consulting (eg. document drafting, graphic design work).

Note 11 Includes business and board members meeting travel, hub operational requirements.

ALBERTA GAMING RESEARCH INSTITUTE BOARD OF DIRECTORS

el-Guebaly, Dr. Nady

Nady el-Guebaly is Professor and Head, Addictions Division, Department of Psychiatry at the University of Calgary. He is past founding Medical Director the Addictions Program, Calgary Health Region. His introduction to mental health and addiction medicine dates back to 1969. Currently, he is Chair, Addiction Psychiatry Section of the World Psychiatric Association and Executive Medical Director and Past-Founding President of the International Society of Addiction Medicine. He has served on the Institute's Board since it was established in 1999 and as its Board Chair since July 2002.

Elio, Dr. Renee

Renee Elio is Associate Vice-President (Research) and Professor of Computing Science at the University of Alberta. She joined the faculty at the University of Alberta in 1985. She currently serves on the Board of the University of Alberta Health Law Institute, the IBM-UofA Centre for Advanced Studies, and the Pacific Institute for Mathematical Sciences. She previously served as a member of the Board of Directors for the Alberta Research Council and for the Government of Alberta's Information and Communication Technologies Institute. Her research concerns computational models of higher-level human cognitive behavior, such as learning, reasoning, and planning. Dr. Elio replaced Dan Mason on the Institute Board as of May 14, 2008.

Fiske, Dr. Jo-Anne

Jo-Anne Fiske serves as Dean of Graduate Studies at the University of Lethbridge. An anthropologist, she researches broad issues of social policy and political economy with a particular focus on impacts of structural inequities and women. Her research has been funded by Social Sciences and Humanities Research Council, BC Centre of Excellence on Women's Health, Status of Women Canada and the National Network of Aboriginal Mental Health Researchers. Her current research addresses links between social

stigma in childhood and family gambling patterns. She has served on the Institute Board since April 2007.

Gibbs van Brunschot, Dr. Erin

Erin Gibbs van Brunschot is an Associate Professor in the Department of Sociology and is Associate Dean, Academic Programs, in the Faculty of Social Sciences at the University of Calgary. Her research interests include crime and deviance, with a particular interest in the study of security and risk at both the individual and institutional levels. She has served on the Institute Board since August 2007.

Hosgood, Dr. Christopher (Chris)

Chris Hosgood is Dean of the School of Health Sciences at the University of Lethbridge and a member of the Department of History. His research has focused on consumerism and popular culture in Victorian Britain and, more recently in Canada, the social history of gambling in Alberta. He has served on the Institute Board since December 2001.

Mason, Dr. Daniel (Dan)

Dan Mason is an associate professor with the Faculty of Physical Education and Recreation and an adjunct professor with the School of Business at the University of Alberta. Dr. Mason's research takes a multi-disciplinary approach and focuses on the business of leisure and sport and the relationships between its stakeholders, including all levels of government, sports teams and leagues, the communities that host teams, agents and players' associations. His research has been funded by the Social Sciences and Humanities Research Council of Canada and the Alberta Gaming Research Institute and he has authored over 30 refereed publications. Dan served on the Institute Board until mid-May 2008 at which time he was replaced by Renee Elio.

Murphy, Mrs. Sheila

Mrs. Sheila Murphy is appointed to the Institute Board by the Alberta provincial government as an external member. She has

previously served on the University of Calgary Senate (1990-1996) as well as the Air Cadet League of Canada and Cubs and Scouts of Canada Society. She owned and operated the Henderson Colleges of Business from 1972 to 1997. She has served on the Institute Board since 1999.

Plourde, Dr. Andre

Andre Plourde was the Chair of the Department of Economics at the University of Alberta (until June 2009). He joined the University of Alberta in 1998. He has served on numerous adjudication committees for granting agencies and in advisory capacities to government departments. In 2007, he was President of the International Association for Energy Economics. He has served on the Institute Board since December 2007.

Williams, Ms. Vickii

Vickii Williams has served as the Executive Director of the Alberta Gaming Research Institute since its inception and serves in an ex officio advisory capacity on the Institute Board. She represents the Institute on a number of inter-organizational and inter-jurisdictional planning bodies for collaborative research initiatives.

Back Row: (left to right) Chris Hosgood, Board Member, U of L; Erin Gibbs van Brunschot, Board Member, U of C

Middle Row: Andre Plourde, Board Member, U of A; Leena Vanhala, Administrative Assistant, AGRI; Nady el-Guebaly, Board Chair, U of C

Front Row: Rhys Stevens, Institute Librarian and Information Specialist; Vickii Williams, Executive Director; Sheila Murphy, Board Member, External Member; Jo-Anne Fiske, Board Member, U of L;

Missing: Renee Elio, Board Member, U of A



BOARD OF DIRECTORS

DR. NADY EL-GUEBALY, MD, BOARD CHAIR

Professor & Head
Addictions Division
Faculty of Medicine
University of Calgary

DR. JO-ANNE FISKE

Dean of Graduate Studies
University of Lethbridge

DR. CHRIS HOSGOOD

Dean, School of Health Sciences
University of Lethbridge

DR. ANDRE PLOURDE

Professor and Department Chair
Department of Economics
University of Alberta

DR. ERIN GIBBS VAN BRUNSCHOT

Associate Professor, Sociology
Associate Dean, Academic Programs
Faculty of Social Sciences
University of Calgary

DR. DAN MASON (TO MAY 2008)

Associate Professor
Physical Education and Recreation Faculty
University of Alberta

DR. RENEE ELIO (FROM MAY 2008)

Associate Vice-President (Research)
University of Alberta

MRS. SHEILA MURPHY

External Member

NODE COORDINATORS

UNIVERSITY OF ALBERTA

Dr. Garry Smith

Gambling Research Specialist
Faculty of Extension

Phone: (780) 492-2770

Fax: (780) 492-8265

Email: garry.j.smith@ualberta.ca

UNIVERSITY OF CALGARY

Dr. David Hodgins

Professor of Clinical Psychology
Department of Psychology

Phone: (403) 220-3371

Fax: (403) 282-8249

Email: dhodgins@ucalgary.ca

UNIVERSITY OF LETHBRIDGE

Dr. Robert Williams

Professor

School of Health Sciences

Phone: (403) 382-7128

Fax: (403) 329-2668

Email: robert.williams@uleth.ca

CONTACT INFORMATION

ALBERTA GAMING RESEARCH INSTITUTE

HUB Mall

University of Alberta

8909S-112 Street

Edmonton, Alberta T6G 2C5

Phone: (780) 492-2856

Fax: (780) 492-6125

Email: abgaming@ualberta.ca

EXECUTIVE DIRECTOR

Vickii Williams

Phone: (780) 492-2817

Fax: (780) 492-6125

Email: vickii.williams@ualberta.ca

ADMINISTRATIVE ASSISTANT

Leena Vanhala

Phone: (780) 492-2856

Fax: (780) 492-6125

INSTITUTE LIBRARIAN

Rhys Stevens

Phone: (403) 329-5176

Fax: (403) 329-2234

Email: rhys.stevens@uleth.ca

MEDIA CONTACT

Phone: (780) 492-2856

Email: abgaming@ualberta.ca

CREDITS

Writers/Editors: Vickii Williams/Rhys Stevens

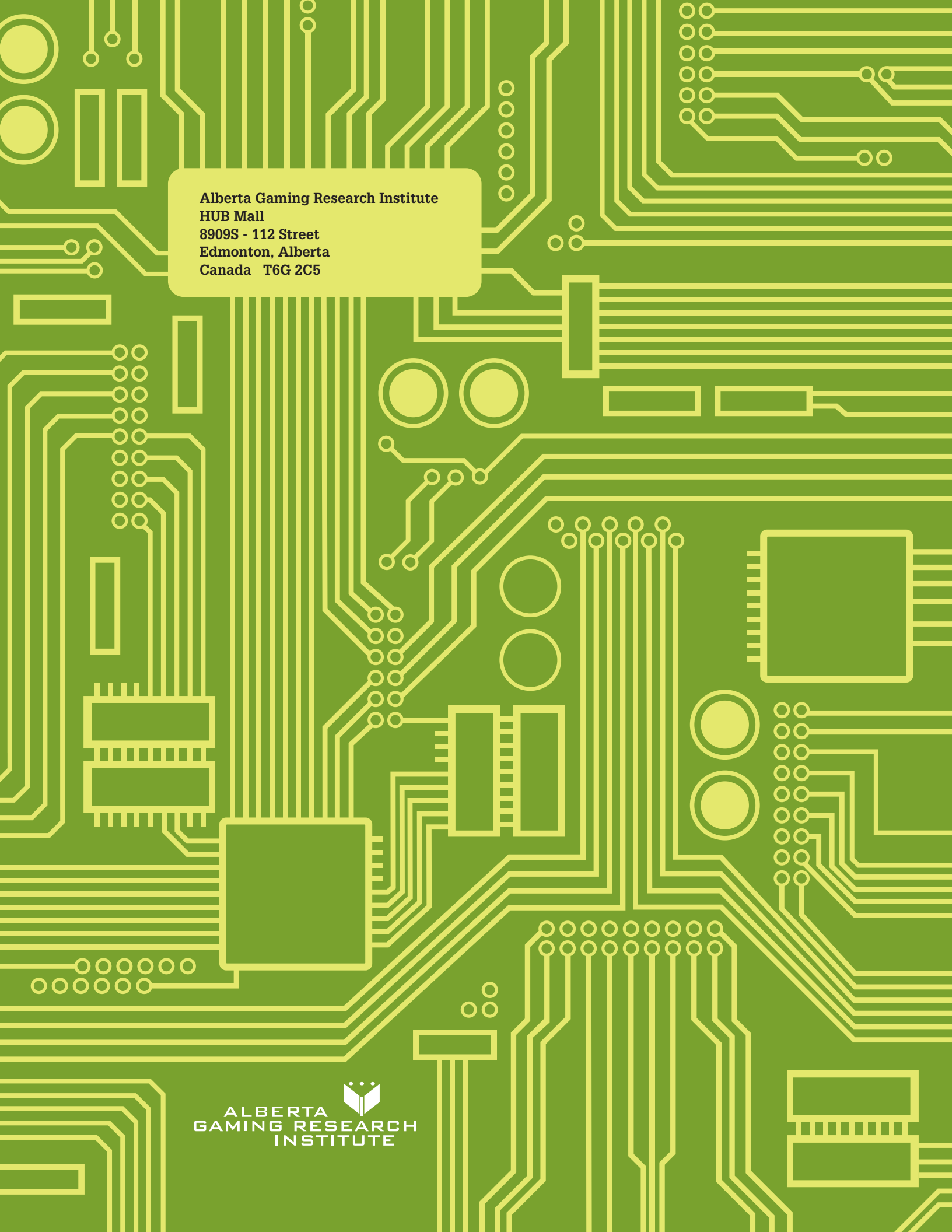
Design: North Design Group

Photo Credits: Donald Lee & Laura Vanags, Banff Centre

ISSN: 1499-7436 (print)
1499-7444 (electronic)

Alberta Gaming Research Institute Annual Report

No. 9, 2008-2009



Alberta Gaming Research Institute
HUB Mall
8909S - 112 Street
Edmonton, Alberta
Canada T6G 2C5